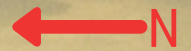


# Parkersburg Industrial Park



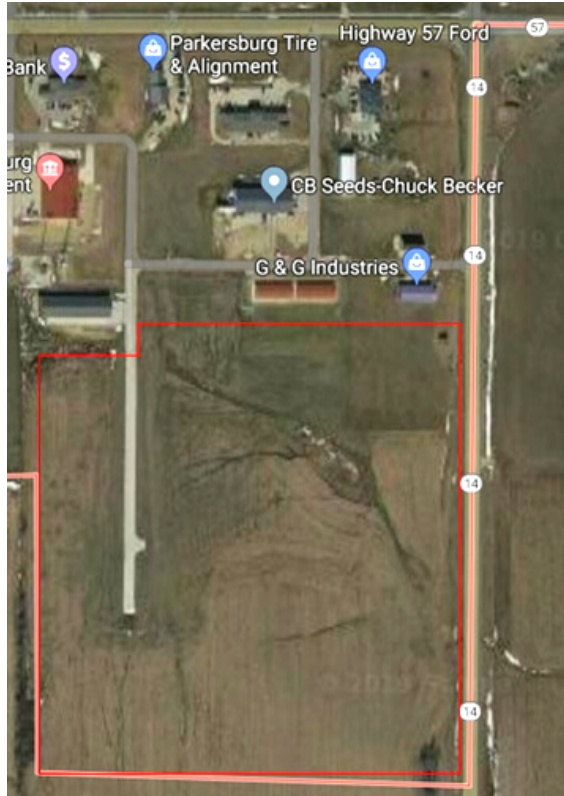
Tim Cuvelier, PED Director  
319-346-1023  
pburged@gmail.com  
www.parkersburgia.com



## The Parkersburg Industrial Park Features:

- Site: 44 acres of shovel ready sites
- Zoning: Industrial
- Electrical: Three-Phase 277v/480v; 12.5 KVA
- Water: 6-inch main
- Sewer: 8-inch main
- Topography: Flat
- Broadband: Local provider with fiber optic dedicated internet up to 1 gig service
- Ownership: Parkersburg Economic Development
- Transportation: Conveniently located 27 miles from Waterloo & 20 miles from Cedar Falls. Parkersburg is located along Iowa State Highway 57 and 14 & 8 miles north of 4 lane Highway 20.

# Parkersburg INDUSTRIAL PARK



## About the Region

Parkersburg is 30 minutes west of the Waterloo/Cedar Falls metro area in northeast Iowa. The park is adjacent to state Highway 14 and 8 miles south of Highway 20. The convenient location offers easy access to interstate 35, 90, 80 and 380.

### The Park is located in the Cedar Valley Region of Iowa

- Total Population 236,038
- Potential labor force draw of 394,944 people from 7 surrounding counties

### Within one day drive from all major midwest markets

- 200 miles south of the Twin Cities
- 297 miles west of Chicago
- 300 miles northeast of Kansas City
- 240 miles northwest of Omaha
- 290 miles west of Milwaukee

## Highlights

Commercial air service is only minutes away. With daily jet service from Waterloo Regional Airport, Cedar Rapids Regional Airport, and Des Moines International Airport.

Workforce training is available through Hawkeye Community College and the University of Northern Iowa located in the Waterloo/Cedar Falls area. Wartburg College is located 23 miles away in Waverly, Iowa.

## Services

Our local economic development teams in Parkersburg and Butler County will coordinate and assist in ensuring your company receives the local and state incentives and other financial assistance your project qualifies for to ensure maximum benefits for your business.

