

GRUNDY COUNTY INDUSTRIAL PARK

GRUNDY CENTER, IOWA - ON 4-LANE HWY 20

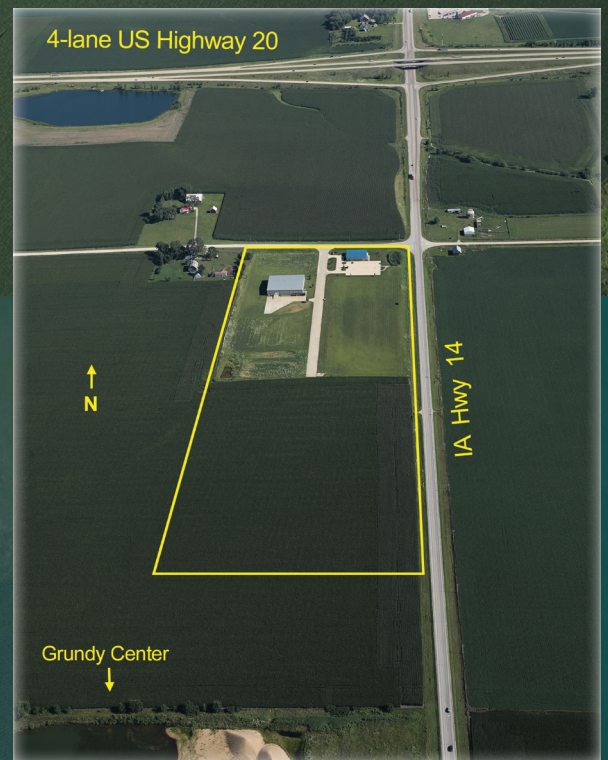


Up to 20 Acres
Available

IA Hwy 14

The Grundy County Industrial Park Features:

- **Site:** Developed shovel ready industrial sites from 1 to 20 acres
- **Zoning:** Industrial Heavy
- **Electrical:** Three-Phase 277v/480v; 12.5 KVA
- **Water:** 8 Inch Main; 30 psi min
- **Sewer:** 6 Inch Main
- **Broadband:** Local provider with fiber optic dedicated Internet up to 50 meg service
- **Ownership:** Private Development Organization
- **Transportation:** 1/4 mile from 4-lane Hwy 20; Iowa Hwy. 14 adjacent to park
- **Topography:** Flat



GRUNDY COUNTY INDUSTRIAL PARK

ABOUT THE REGION

Grundy County Industrial Park is only 15 miles west of the Waterloo/Cedar Falls Metro Area with easy 4 lane connections to Interstates 35, 80, 90, and 380.

The park is located in the Cedar Valley Region of Iowa

- Total population of 236,038
- Potential labor force draw of 394,944 people from the 7 surrounding counties

Within a days drive of all major Midwest markets

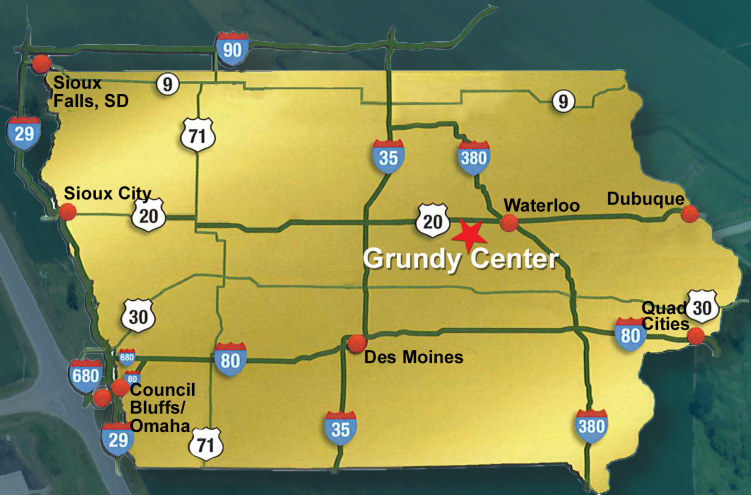
- 180 miles south of the Twin Cities
- 265 miles west of Chicago
- 315 miles northeast of Kansas City

Commercial air service is only minutes away, with daily jet service from American Airlines at the Waterloo Regional Airport. The Des Moines International Airport is just a 1.5 hour drive.

Workforce training is available through Hawkeye Community College, and the University of Northern Iowa, both located in nearby Waterloo/Cedar Falls. Hawkeye Community College also has a satellite training facility located on-site in the Grundy County Industrial Park.

SERVICES

Our local economic development team will coordinate and assist in submitting the necessary paperwork to ensure the company receives the local and state incentives and other financial assistance that the project qualifies for. The economic development team will act as the company's advocate to ensure maximum benefit to the company for the initial construction and future expansions, as an existing business.



Jeff Kolb, Executive Director
319-267-2858
butlergrundy@netins.net