

Grundy Center Development Park

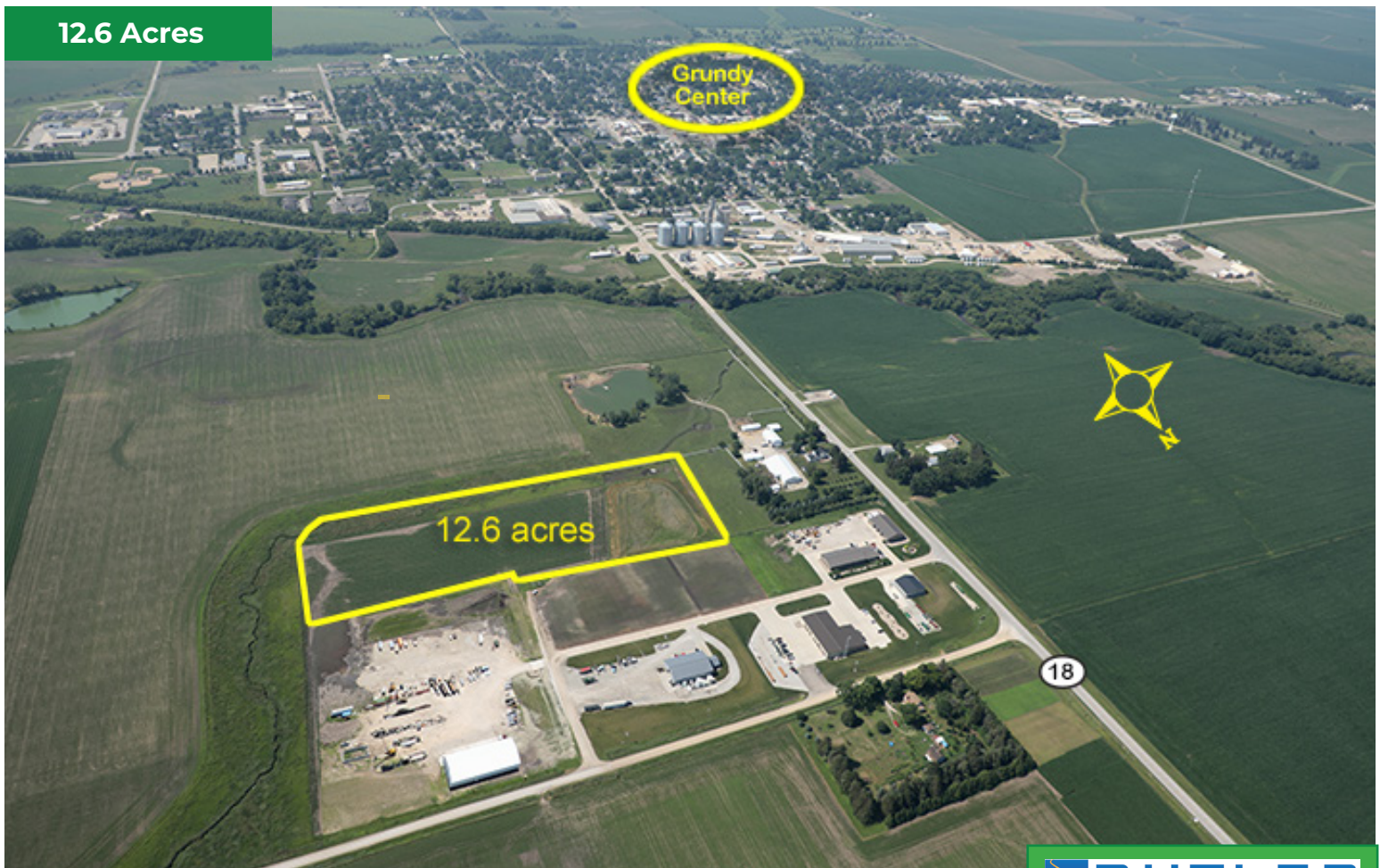
Grundy Center, Iowa - On Iowa Highway 14

The Grundy Center Development Park Features:

- SITE: Developed shovel ready industrial sites up to 12.6 acres
- ZONING: Industrial
- ELECTRICAL: Grundy County REC
- Three-Phase 277v/480v; 12.5 KVA
- WATER: City of Grundy Center
- 12 Inch Main; 70 psi
- SEWER: City of Grundy Center
- 8 Inch Main
- NATURAL GAS: Black Hills Energy
- Service to the Site
- BROADBAND: Local Provider with Fiber
- OWNERSHIP: Local Development Organization
- TRANSPORTATION: 6 Miles South of 4-Lane Highway 20 Iowa Highway 14 Adjacent to Site
- TOPOGRAPHY: Flat



12.6 Acres



Grundy Center Development Park

Grundy Center, Iowa - On Iowa Highway 14

ABOUT THE REGION

The Grundy Center Development Park is 21 miles southwest of the Waterloo/Cedar Falls Metro Area with easy 4-lane connections to Interstates 35, 80, 90, and 380.

The park is located in the Cedar Valley Region of Iowa

- Total population of 236,038
- Potential labor force draw of 394,944 people from the seven surrounding counties

Within a days drive of all major Midwest markets

- 180 miles south of Minneapolis
- 265 miles west of Chicago
- 315 miles northeast of Kansas City

Commercial air service is only minutes away, with daily jet service from American Airlines at the Waterloo Regional Airport. The Des Moines International Airport is just a 1.5 hour drive.

Workforce training is available through Hawkeye Community College and the University of Northern Iowa, both located in nearby Waterloo/Cedar Falls. Hawkeye Community College also has a satellite training facility nearby, located only six miles from the industrial park.

SERVICES

Our local economic development team will coordinate and assist in submitting the necessary paperwork to ensure the company receives the local and state incentives and other financial assistance that the project qualifies for. The economic development team will act as the company's advocate to ensure maximum benefit to the company for the initial construction and future expansions, as an existing business.

