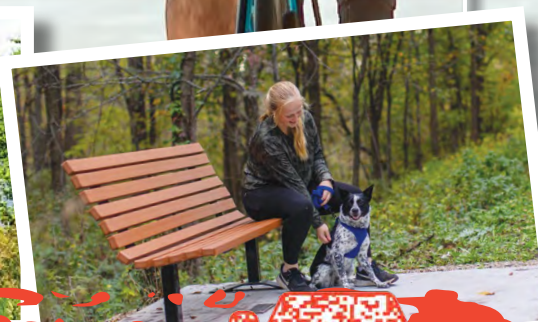


Experience **BUTLER COUNTY**

ALLISON | APLINGTON | AREDALE | BRISTOW | CLARKSVILLE | DUMONT | GREENE | NEW HARTFORD | PARKERSBURG | SHELL ROCK



Iowa's Outdoor Recreation Destination

www.butlercountyiowa.com



LOCATION

LOCATION

LOCATION



Is an expansion or relocation in your company's future?
Location plays a key role in efficiently getting your product to market.
Butler County is in one of the Midwest's fastest growing logistics corridors.

THE ADVANTAGES...

- Access to major 4-lane highway corridor. I-380, I-35, Hwy 218 & Hwy 20
- Shovel ready Industrial Parks throughout Butler & Grundy Counties
- Locally owned railroad offering flexible connections to all U.S. markets
- Workforce training and development programs
- Labor force draw of over 200,000 in the Cedar Valley Region
- Confidential site selection assistance
- Financial assistance programs
- Small Business Financial Assistance Programs"



Jeff Kolb
Executive Director

Email: info@butlergrundy.com
Phone: (319) 267-2858

422 North Main
Allison, Iowa 50602

WELCOME TO

Butler County



Welcome to Iowa's Outdoor Recreation Destination! Located in The Cedar Valley Region of Northeast Iowa, Butler County offers a variety of ways to experience the outdoors. From biking to kayaking, or a weekend of camping with the family, you can do it all right here. We also have some unique experiences that you will not find anywhere else, along with local dining, unique shopping, and fun events in our small communities. Only minutes away in the larger cities of Waterloo/Cedar Falls you will find Iowa's newest theme park. Whether visiting to connect with family and friends, or looking to connect with nature, you will find all sorts of family friendly one-of-a-kind experiences.

After your visit is complete, I encourage you to return, and consider making Butler County your home. Recent growth with new business and industry has created more good paying jobs than ever before. Expanding fiberoptic broadband by local providers has made this a prime location for those that can work remotely. A lower cost of living, and a safe environment to raise a

family round out the reasons why now is the perfect time to make Butler County your home. I encourage you to follow our social media handle @livethevalley on Facebook, Instagram, Twitter, and LinkedIn to see for yourself how we "Live the Valley". Check out www.livethevalley.com to see all that our region has to offer, plus you can use our handy "cost of living comparison tool" to see how much money you can keep in your wallet here in the Cedar Valley, compared to other cities in the United States!

We are only a phone call or email away to help with planning your visit, or for relocation assistance. Feel free to contact our office at (319) 267-2858 or send an email to info@butlergrundy.com.

JEFF KOLB

Executive Director

Butler-Grundy Development Alliance



Legend

Tent
Camping



Fishing



Winter
Recreation Area



Hiking
Trails



Trailer
Camping



Boating
Access



Bike Trail
Access



Sanitary
Disposal Station



Golf
Course



Contents

4	Festivals and Events	14	Welcome to Aplington	28	Welcome to Parkersburg
5	Shell Rock River	16	Welcome to Aredale	30	Welcome to Shell Rock
6	Rolling Prairie Bike Trail	17	Welcome to Bristow	32	Church Listings
8	Campgrounds and Rates	19	Welcome to Clarksville	34	Conservation Map
10	Welcome to Allison	22	Welcome to Dumont	36	Barn Quilts
13	Welcome to Austinville	24	Welcome to Greene	38	Snowmobile Trails
		26	Welcome to New Hartford		



**BUTLER COUNTY
VISITORS GUIDE
PRODUCED BY:**

ECLIPSE NEWS-REVIEW
parkersburgeclipse.com

**BUTLER COUNTY
STAR TRIBUNE**
butlercountytribune.com



Divisions of
Mid-America
Publishing & Printing



2023 BUTLER COUNTY

Festivals & Events

www.butlercountyiowa.com

FEBRUARY

4 Lighted Night Ski – Heery Woods Clarksville (319) 278-4237

APRIL

28 - 29 City-Wide Garage Sales Greene (641) 816-4631

29 Spring Craft Show New Hartford (319) 404-4841

MAY

6 City-Wide Garage Sales Parkersburg (319) 346-1461

11 - 13 City-Wide Garage Sales Clarksville (319) 480-7579

JUNE

2 - 3 Allison Days Allison (319) 267-2245

2 - 3 City-Wide Garage Sales Allison (319) 267-2245

2 - 3 Beaver Creek Days New Hartford (319) 404-9008

3 City-Wide Garage Sales Aplington (319) 347-2425

5 - 6 Aplington Days Aplington (319) 347-2425

8 - 10 Pioneer Days Clarksville (319) 278-4644

10 City-Wide Garage Sales New Hartford (319) 404-4841

11 Glenn Miller Orchestra Allison (319) 267-2245

16 - 17 River Days Greene (641) 816-4631

21 - 25 Butler County Fair Allison (319) 267-2775

22 Sawyer Brown in Concert Allison (fair) (319) 267-2775

JULY

1 - 4 4th of July Celebration Shell Rock (319) 885-6555

3 Fireworks Shell Rock (319) 885-6555

3 Fireworks Greene (641) 816-4631

7 - 8 Sandbaggin' Days Dumont (641) 857-3411

7 - 8 City-Wide Garage Sales Dumont (641) 857-3411

9 Mollie B Polka Concert Clarksville (319) 278-4531

12 Wilder Park Concert Series Allison (319) 267-2245

14 Relay for Life of Butler County Allison (319) 278-1079

19 Wilder Park Concert Series Allison (319) 267-2245

26 Wilder Park Concert Series Allison (319) 267-2245

29 - 30 Bristow Days Tractor Pull & Dance Bristow (712) 790-7309

30 Herb Fest Greene (641) 330-0938

AUGUST

2 Wilder Park Concert Series Allison (319) 267-2245

4 - 5 Fun Days Parkersburg (319) 346-2262

5 At Home Aplington Tractor Ride Aplington (319) 347-2425

6 Barefoot Becky Polka Concert Clarksville (319) 278-4531

9 Wilder Park Concert Series Allison (319) 267-2245

16 Wilder Park Concert Series Allison (319) 267-2245

20 Show & Shine Car Show Parkersburg (319) 269-6242

26 KLMJ/KQCR Tractor Parade To Be Announced (641) 456-5656

31 - Sept. 2 Highway 3 Garages Sales 3 Counties (641) 456-5668

SEPTEMBER

21 - 23 City-Wide Garage Sales Clarksville (319) 480-7579

29 - 30 City-Wide Garage Sales Greene (319) 415-0554

30 Pumpkin Festival New Hartford (319) 983-2548

OCTOBER

7 Harvest Moon Festival Allison (319) 267-2245

14 Harvest Bazaar Shell Rock (319) 240-9106

17 Halloween Hike – Heery Woods Clarksville (319) 278-4237

28 Craft Expo Clarksville (319) 278-4644

NOVEMBER

4 Craft Show New Hartford (319) 404-4841

25 Small Business Saturday Shop Local (319) 267-2858

29 Tree Lighting Festival Shell Rock (319) 885-6555

DECEMBER

2 Christmas on Main Greene (641) 816-5534

2 Downtown in December Parkersburg (319) 346-2262

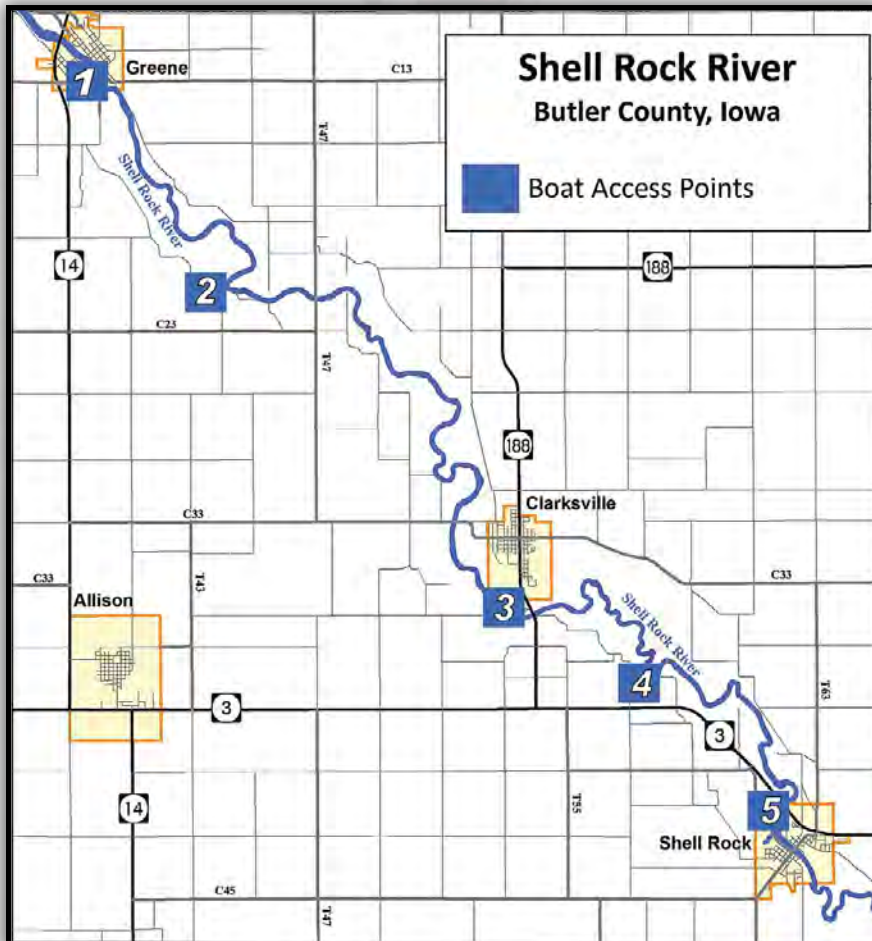
2 - 9 Tiny Tim Festival of Trees Clarksville (319) 278-1168

2, 9, 16, 23 Community of Lights Aplington (319) 347-2425

3 Images of Christmas Clarksville (319) 278-4531

BOAT OR FLOAT THE

Shell Rock River



Boat and Kayak access available at:

1. a. Perrin City Park
b. Wunsch Memorial Park
2. Camp Comfort Recreation Area
3. Heery Woods State Park
(north side, south side off Timber Road)
4. Renning's Landing
5. a. Shell Rock Recreational Area
b. Dam - North side of river
c. Below dam in Shell Rock on East Water Street

Kayak float times vary, please call (319) 278-4237 for river level and more information.





ROLLING PRAIRIE

Bike Trail

— 21-mile paved bike trail

**Food and beverages available
downtown in each community**





Trail Heads and Amenities

SHELL ROCK

- Trail head located 1/3 mile north of Highway 3 on T-63
- Parking available
- ATM at Kwik Star
- Kiosk with maps and information
- New bike repair station is available

CLARKSVILLE

- Trail head at Volunteer Park (one block east of Highway 188, south edge of town)
- Parking and restrooms available
- New bike repair station is available at Volunteer Park
- ATM at Casey's General Store and Iowa State Bank (downtown)
- Trail head at Heery Woods State Park - kiosk with maps and information

ALLISON

- Trail head near downtown on Elm Street one block east of Main Street - kiosk with maps and information
- Trail head at Wilder Park (park entrance on Highway 3)
- Parking and restrooms available
- ATM at Casey's General Store and Lincoln Savings Bank (downtown)
- New bike repair station is available

BRISTOW

- Trail head located in southeast area of town on Grand Avenue
- Parking and restrooms available at city park, two blocks southwest of trail head
- Ice Cream Stand located in city park. Open daily 4 p.m. to 8 p.m.
- New bike repair station is available



We drive. You ride.

Our dream for the world is to be able to spend as much time cycling as possible. We believe everyone should be able to experience the love and passion for bikes that we do at Andy's Bike Shop. If you are traveling the trails in Butler County, we can bring the Bike Shop to you! You name it, and Andy's Bike Shop can be there. Mobile services and in person customer service at our store in Cedar Falls, Iowa.





BUTLER COUNTY

Campgrounds

Camping in Butler County

Please visit the appropriate city sections to see what each of these parks has for amenities!

Butler County Conservation Board Campgrounds

No reservation system in place at this time.

Rates for 2023: All sites, including tents, are \$15.00 per night, or \$90.00 per week

For information, call (319) 278-4237

BEAVER MEADOWS PARK
Parkersburg (Highway 14 north edge)
16 Electrical sites • 10 Non-electrical

CAMP COMFORT
Greene (Four miles southeast off Highway 14)
25 Electrical sites • 15 Non-electrical

HEERY WOODS STATE PARK
Clarksville (Highway 188 south edge)
20 Electrical sites • 15 Non-electrical

SHELL ROCK PARK
Shell Rock (Highway 3 west edge)
27 Electrical sites • 15 Non-electrical

WUNSCH MEMORIAL AREA
Greene (Along river near city center)
10 Electrical sites • 5 Non-electrical



WILDER PARK AERIAL

WILDER PARK Allison (Highway 3 east edge)

26 Full service sites • 28 Electrical and water
For reservations, call (319) 267-2245

Online reservations at www.visitwilderpark.com

Rates for 2023: Regular sites with electric - \$20.00 per night
Full Service (electric plus water and sewer) - \$24.00 per night,
Tent sites - \$16.00 per night.

Lodging



ALLISON
Emerald Door Inn Motel
(319) 267-2657



CLARKSVILLE
New Day Dairy's Guest Barn
(319) 278-4455



PARKERSBURG
Legend Trail Inn & Suites
(319) 346-9788



SHELL ROCK
Pal's Old Mill Bed & Bath
(515) 491-4016

Butler County _____

Eateries



		ADDRESS	BREAKFAST	LUNCH	DINNER
<i>Allison</i>	Gronigan's	403 S. Main St			
<i>Arlington</i>	Stinky's Bar and Grill	924 Parriott St	•	•	•
	Peppercorn Pantry	911 Parriott St	•	•	
<i>Aredale</i>	The Outpost	112 E. Main St		•	•
<i>Clarksville</i>	Doc's Restaurant Lounge	221 N. Main St		•	•
	Lizzy Lou's	205 N. Main St	•	•	•
	Pete & Shorty's	113 North Main St.	•	•	•
<i>Dumont</i>	The Shed Bar & Grill	512 Main St.			•
<i>Greene</i>	Black Sheep Coffee Baa	115 E. Traer St	•	•	
	TJ's Bar and Grill	123 E. Traer St		•	•
	Splitz Bar and Grill	3064 HWY 14		•	•
<i>New Hartford</i>	21 Junction	701 Water St			•
	Legend Trail	1403 HWY 57		•	•
<i>Parkersburg</i>	Matt's Bar and Grill	700 HWY 57			•
	Bev and Hennie's	706 HWY 57	•	•	
	T+L's Pizza	703 6th St			•
<i>Shell Rock</i>	Riverview Cafe	202 S. Cherry St	•	•	•
	TP's Cooler	201 S Cherry St		•	•

CAR COUNTRY AUTO BODY



Daniel Stanbrough
Owner

319-267-9999 Business P.O. Box 176
319-267-9998 263 North Main
carcountryautobody@yahoo.com Allison, IA 50602



Sales • Rentals • Service

Water Softeners • Iron/Odor Removal
Reverse Osmosis • Water Analysis
Salt And Bottled Water Deliveries



Hellenbrand

319-267-2053

514 4th St., Allison, IA • 1-888-442-6949
wixwaterworks.com

Three Communities located on one convenient campus in Clarksville!



Clarksville

Skilled Nursing & Rehabilitation Center

115 N. Hilton St., Clarksville, IA

(319) 278-4900 • Fax (319) 278-4166

- Skilled Nursing, Physical, Occupational, and Speech Therapy
- Private and Shared Room Accommodations
- Home Delivered Meals
- Maintains Above Average Staff to Resident Ratio



WESTSIDE

ASSISTED LIVING SUITES

110 N Ely, Clarksville, IA

(319) 278-4909 • Fax: (319)-278-4903

- Offering comfortable and affordable living accommodations – studio, one and two bedroom options
- Promoting independence while giving families peace of mind
- Three meals a day
- Supporting Independence
- Tenant Directed Services



"A Passion for Excellence"

Community Retirement Village

- Independent Living Complex
- USDA Subsidized (rental assistance)
- Elderly & Disabled housing on one block
- 1 & 2 Bedroom Apartments
- Maintenance Free
- On-going refurbishing of apartments
- Meal Delivery Services*
- Social Room to Accommodate Large Gatherings

(319) 278-4900

*=additional charge



For more information on all 3 living accommodations, visit www.clarksvilleskillednursing.com



WELCOME TO — *Allison*

CITY HALL (319) 267-2245 Allison is the county seat.

Businesses include a modern grocery store, variety store, restaurant and bar, service stations, national discount retailer, convenience store, motel, and more.

HISTORICAL LOG CABIN

Allison, Butler County Fairgrounds

Built in the 1850s, this was originally a two story log cabin and served as a stagecoach stop between Waterloo and Mason City in Coldwater Township southwest of the town of Greene. The cabin also served as the first hotel in Greene. Many of the logs are black walnut and were found to be firmly mortised into the adjoining log. In 1960 the log cabin was turned over to the Butler County Historical Society. You can visit it during the annual Butler County Fair, or by appointment by calling (319) 885-6279.



LITTLE YELLOW SCHOOLHOUSE

LITTLE YELLOW SCHOOLHOUSE

Allison, Courthouse Square

Built in 1888, this one room schoolhouse served the educational needs of section three in Pittsford Township near the town of Aredale until 1957. The building was relocated to the courthouse square in Allison, and was the first attraction of the Butler County Historical Society. Volunteer retired school teachers help educate current school children from around the county on what it would have been like to get their education in a one room school. The school is outfitted with sleigh desks and other props from the era when it was used. Visitors are welcome. Appointments are required by calling (319) 885-6279.



**Butler County
Abstract Company**

Providing Accurate, Responsible Service Since 1869.

503 N. Main St., PO Box 158, Allison, IA 50602

Phone: 319-267-2087 • Fax: 319-267-2069

Email: abstractor@butlercountyabstract.com



ALLISON LIBRARY

412 3rd Street, Allison • (319) 267-2562

www.allison.lib.ia.us

The friendly Allison Public Library welcomes all visitors. Use one of our six public access computer stations or wireless internet service. Browse our inviting collection of new releases, BRIDGES e-books, DVDs, newspapers, and magazines. Research your family history or find a classmate in your high school yearbook. Rent our Community Room complete with kitchenette and LCD projector for your next meeting or event.

We enjoy hosting entertaining programs for patrons of all ages. Join us for Summer Reading programs, Reading Parties, BINGO, Pajama Parties, our Pie Contest, School Field-Trips, our Holiday Open House, or an author event.

We make photocopies, fax, and assist with all of your needs.

Please let us serve you on: Monday 10 a.m. to noon and 2 – 6 p.m., Tuesday 2 – 7 p.m., Wednesday 2 – 6 p.m., Thursday 2 – 7 p.m., Friday 2 – 6 p.m., Saturday 9 a.m. to 3 p.m.



BUTLER COUNTY HALL OF FAME

BUTLER COUNTY HALL OF FAME

Allison, Courthouse Square

The Hall of Fame is housed in a structure that is topped off with the old cupola that was removed from the Butler County Courthouse that was built in 1881, and torn down in 1975. The dome is 18 feet in diameter, 30 feet tall, and weighs approximately 7,000 pounds. Inside, you will find photos of county residents who have been inducted into the hall of fame over the years. Also on display are military artifacts dating back to the War of 1812 that were donated by county residents and their families who served in the military. Visitors are welcome. Appointments are required by calling (319) 885-6279.



BIKE ROUTE AT WILDER PARK

WILDER PARK

Allison, 22301 Highway 3
www.visitwilderpark.com



This large city park encompasses 78 acres with a modern RV campground.

The camping area has 26 full hookup sites, 26 with electric and water and 22 full season sites. There is also a tent camping area. You will enjoy two scenic ponds for fishing and other water activities, shelter houses, playground, chapel, banquet lodge, rental cabins, miniature golf - disc golf, pickleball, and other large yard games. Facilities include restrooms and showers. Wi-Fi is also available. Bike riders have direct access to the Rolling Prairie Trail on the north end of the park that provides safe family recreation while on your camping getaway. The park also hosts weekly musical entertainment for campers and the public to enjoy free of charge. Several of the headline events are included in the calendar of events found elsewhere in this guide.

Online camping reservations are now available.

ALLISON SWIMMING POOL

920 Fourth Street • (319) 267-2762

Fun Retro Shopping!

- ◆ Household Decor
- ◆ Kitchen And Glassware
- ◆ Vinyl Records
- ◆ And More from the 1950's to 1970's.

- ◆ Vintage Electronics
- ◆ Barware
- ◆ Vinyl Records

We are an occasional store open select weekends and by appointment.

Follow us on Facebook to get advance notice of our open dates and to view pictures.

308 North Main St.
 Downtown Allison
 (319) 239-0633



ROLLING PRAIRIE BIKE TRAIL

ROLLING PRAIRIE BIKE TRAIL

This 21-mile paved trail connects Allison, Bristow, Clarksville, and Shell Rock. This hard surface trail features a nice mix of natural canopy and scenic bridges. The Allison trail head is on Elm Street, a block east of downtown, and there is also access at Wilder Park just off Highway 3.

The expansion from Allison to Bristow was completed in 2018. Each of the trailheads features a kiosk with maps, trail information, and more. In the future, plans are to expand west to Dumont, once funding is secured.

New bike repair station is available at the Allison trailhead.



ALL VETERANS MONUMENT

ALL VETERANS MONUMENT

Allison, 520 North Main Street

Their Duty was to Serve. Our Duty is to Remember.

The All Veterans Monument is a tribute to all Veterans, no matter where they call home. Family and friends of veterans have honored a past or present member of the military with their name and branch of service on the pentagonal obelisk in the center of the monument field. A fallen service member who died while serving is honored with a star beside their name. The monument currently has over 800 engraved names.

An application for adding a veteran's name may be obtained from the Allison City Hall for an engraving fee of \$100. The following parameters have been set to use as a guide line to have a named engraved on the monument. You must have served, or are currently serving in the military as active military personnel. National Guard or Reserves are eligible.



BUTLER COUNTY MUSEUM

BUTLER COUNTY MUSEUM

Allison, Butler County Fairgrounds

The museum contains numerous exhibits ranging from children's toys, medical equipment, hand tools, and a wedding gown and suit worn by a couple that was married at the county fair in 1935. Other artifacts include the first folding ironing board, various farming tools and equipment, and various artifacts relating to life in Butler County in years past. The Butler County Museum is open during the fair, and also by appointment. Call (319) 885-6279 for more information.

WELCOME TO _____ *Austinville*



AUSTINVILLE HISTORICAL SOCIETY

13376 320th Street, Austinville

The society is located in the old Austinville Bank which was founded in 1911 through the leadership of Samuel L. Patterson with Walter G. Austin and Richard C. Bode. The bank building was built around 1916. This bank building has a unique history, and is referred to as "the most robbed bank in Iowa", enduring many robberies and attempted robberies before it closed. This is the one remaining structure of the original main street businesses from that time. It was one of the few banks that stayed open during the depression. Displays consist of early Austinville items from the local businesses. There is also an extensive inventory of histories, pictures, and written items to be read or viewed at the historical society.

There is usually a gathering of locals for coffee each Tuesday from 9-10 a.m. for reminiscing and current local news. Feel free to drop by for coffee and conversation.

Other times to view items are by appointment. Call any of the Historical Society board members. Board member numbers are posted in the entry to the building. Call Carolyn DeVries at (319) 347-2983 to set up a time to view items.



AUSTINVILLE HISTORICAL SOCIETY




1-800-HEY-MORT
(6678)



**RESIDENTIAL, COMMERCIAL
AND AGRICULTURAL**

PUMP & WELL INSTALLATION AND REPAIR
SEPTIC SYSTEM INSTALLATION AND SERVICE
TIME OF TRANSFER & SEPTIC PUMPING



1-800-579-MORT
(6678)

**GEOHERMAL
HEATING &
COOLING**



**RESIDENTIAL AND
LIGHT COMMERCIAL**

PLUMBING, AIR SOURCE HEAT PUMPS,
FURNACE & CENTRAL AIR AND DUCT CLEANING

www.mortsonline.com Kent Morton, Owner



WELCOME TO *Aplington*

CITY HALL (319) 347-2425 Aplington is a small community nestled between the farm fields of northeast Iowa. Main Street offers restaurants, a convenience store, tea room, quilt shop, and gift shop. A new popcorn stand downtown is open Sunday evenings during the Summer from 6 p.m. to 8 p.m. Aplington is "Northeast Iowa's Best-Kept Secret!"



APLINGTON LEGION MEMORIAL LIBRARY

929 Parriott Street, Aplington • (319) 347-2432
www.aplinton.lib.ia.us

You are welcome to visit our user-friendly library. With seven public access computers, five iPads, Wi-Fi, DVDs, e-books, magazines, fax machine, scanner, full color copier, and laminating service, we have become so much more than just a place that houses books.

We offer a variety of programming for children, home school families, young adults and adults. Besides books and magazines we also have board games, snap circuits, maker boxes, audio books, DVDs, iPads and cake pans available for check-out. During November and May we have a large book sale, that includes stuffed animals, DVD's, tins, greeting cards plus much more. The sale is sponsored by the Aplington Friends of the Library.

By visiting www.aplinton.lib.ia.us you will be in the know about what is currently happening at the Aplington Library. You can also find us on Facebook. We are at your service on Monday and Wednesday from 10 a.m. to 5 p.m., Tuesday and Thursday from 10 a.m. to 7 p.m., and Saturday from 9 a.m. to noon, and Friday from noon to 5 p.m..

APLINGTON SWIMMING POOL

Aplington Recreation Complex
1311 Parriott Street, Aplington
(319) 347-6059

APLINGTON GOLF COURSE

Aplington Recreation Complex (9 holes)
1311 Parriott Street, Aplington
(319) 347-6059



APLINGTON HISTORICAL SOCIETY

905 Parriott Street, Aplington
(319) 347-2799

This relatively new organization strives to preserve the rich heritage of Aplington, and the surrounding area. Started in 2006, this non-profit organization houses their collection of artifacts and memorabilia in the only building in the community to survive a devastating fire in 1901. The organization's collection includes historical pieces from the former Aplington School, advertising items from past businesses, records from past and present civic groups and churches, and more to keep the heritage of the community preserved for future generations. The historical society also houses the records of the former DeBuhr Maternity Home that was located in Aplington. The organization meets monthly, while the facility is open by appointment only or during special events.

SKATE PARK

6th Street and Caldwell Street

The only skate park in Butler County can be found in Aplington. This popular facility is the perfect place for people of all ages to perfect and share their skateboarding skills in a controlled environment.

The park boasts a variety of obstacles including ramps, rails, and a fun box that cater to a variety of skill levels. The skate park is located in the city park where restrooms and seating are available. The skate park is not lighted, and is open during park hours until 11 p.m.



APLINGTON POPCORN STAND



APLINGTON CITY PARK

APLINGTON CITY PARK

Sixth Street and Caldwell Street

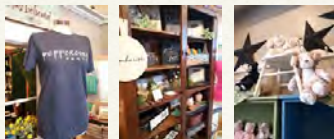
This centrally located community gathering spot is the perfect place to relax in the shade or enjoy a family picnic or reunion. You will find an enclosed shelter house with ADA seating, an open shelter house, playground, an elevated performance stage, and restrooms. The park offers plenty of shade, and is only a short walk from the downtown business district.



APLINGTON MOVIE IN THE PARK



COOKBOOKS NOW AVAILABLE!



Hours: Tuesday-Saturday 9 a.m. to 5 p.m.

Brunch 9 - 11 a.m. • Lunch 11 a.m. - 2 p.m. • Dessert 2 - 5 p.m.

911 Parriott St. Aplington • 319-347-2797

peppercornpantry.com

Check us out on Facebook!

**PROVIDING ALL OF YOUR
TAX AND ACCOUNTING NEEDS
IN BUTLER COUNTY!**

<p>INCOME TAX</p> <p>Stress-free professional tax services for you or your business.</p>	<p>PAYROLL</p> <p>On-time, every time, payroll processing you can trust.</p>
<p>ACCOUNTING</p> <p>Knowledgeable Accounting Services You Can Depend On.</p>	<p>QUICKBOOKS</p> <p>From QuickBooks Setup to Troubleshooting, We Can Help.</p>

219 3rd St Parkersburg IA 50665
319-346-1107 • cory@a-ptaxandaccounting.com

Campbell-Mellema
INSURANCE AND REAL ESTATE

**Auto • Home • Business • Life
Health • Crop • Hail**

Over 50 Years of Experience!

**And we can sell
yours, too!**

www.campbellmellema.com

319-346-1284

206 6th St., Parkersburg, IA



WELCOME TO _____ *Aredale*

CITY HALL (641) 894-3441 Aredale is a small farming community. The Aredale city park offers a shelter house and playground area. Aredale is home to a restaurant and bar, as well as ag related businesses.

KYLE WILDLIFE AREA

13286 13th Street, Aredale

Donated by Joe Kyle as a wildlife refuge, this 79-acre area provides an excellent winter habitat for a wide array of wildlife including pheasants, deer, and songbirds.



BRISTOW TRACTOR PULL



THE OUTPOST

Here to serve you....

- Broadband
- Telephone
- Cable TV
- Business Systems
- Network Wiring
- WiFi Routers



Dumont Telephone
Living, working & investing locally.

**Broadband Internet
Streaming Video**

dumonttelephone.com | 641-857-3211

506 Pine Street
P.O. Box 349

Dumont, IA 50625-0349

www.dumonttelephone.com

641-857-3211

WELCOME TO _____ *Bristow*



CITY HALL (641) 775-3262 Bristow is a small farming community. The Memorial Park features a shelter house, new attractive playground area, plus basketball courts and a ball diamond nearby. Bristow is the home of Paul "Ed" Yost, the father of the "Modern Hot Air Balloon." A monument honoring Ed Yost is located near the city park.

NORTHEAST IOWA CHRISTIAN SERVICE CAMP

19268 Forest Avenue • (641) 775-3238

Located one mile west of Bristow, this 30-acre scenic getaway is bordered by Boylan Creek and the Rolling Prairie Bike Trail. The park-like setting offers two seven-person cabins, a single gender dorm with an 80-person capacity and a dual gender dorm with 100-person capacity. You will also find a chapel, kitchen, dining hall, and multi-purpose building. Recreational facilities include disc golf, miniature golf, 9-Square, gaga ball, volleyball, and a water slide. Camping facilities include RV hookups, freshwater, and dump. The facility is available for private rentals from mid-August through May.

ROLLING PRAIRIE BIKE TRAIL

This 21-mile paved trail connects Bristow, Allison, Clarksville, and Shell Rock. This hard surface trail features a nice mix of natural canopy and scenic bridges. In Bristow, the trail head is on the southeast area of town on Grand Avenue restrooms and parking are available at the city park, two blocks NW of the trail head. For a refreshment break, stop by the new ice cream stand in the park near the splashpad.

The expansion from Allison to Bristow was completed in 2019. Each of the trailheads features a kiosk with maps, trail information, and more. In the future, plans are to expand west to Dumont, once funding is secured.

A new bike repair station is available at the Bristow trailhead.



BRISTOW SPLASHPAD

BRISTOW SPLASHPAD AND ICE CREAM SHACK

716 West Street, Bristow

Open daily 10 a.m. to 8 p.m. during summer

The splashpad is located in the city park, and boasts nine water features that young kids will enjoy to cool down on the hot summer days. Free admission. A new concession stand and restrooms are now available. The park also features a playground, shelter house, and plenty of shade to relax and enjoy the outdoors. "The Ice Cream Shack" is open daily from 4 p.m. – 8 p.m.

BUTLERCOUNTYIOWA.COM

LITTLE VALLEY CHURCH

518 Early Street, Bristow

Said to be the smallest church in Iowa, measuring in at six feet by eight feet and ten feet tall, not including the steeple. Inside you will find four small pews to seat four adults, an altar, and yes, room to stand up! Constructed in 1972, it was originally located in Allison. The small church has hosted visitors from over 40 states. Owner Sally Schneiderman loves to have visitors to the church and adjacent flower gardens. Open by request only. Please call (319) 429-6536 for information.



BRISTOW ICE CREAM SHACK



Dralle

TREE AND BRUSH SHREDDING

Tree and Brush Maintenance Specialists

FARMS • PARKS • UTILITIES • BLDG. SITES



TREE PULLER



GRAPPLE BUCKET

Wayne Dralle

16338 140th St. - Bristow, IA 50611
 Cell: 641-330-3446 • Home: 641-775-3446
www.drallertreeandbrushshredding.com
waynedralle@gmail.com



NEW ADVENTURES. AUTHENTIC COWS. COMFY BEDS.

Book @ newdaydairy.com

#sleepwiththecows

with 24/7 cow gazing on a modern dairy farm
private 3 bed/bath vacation rental



IMPROVE
THE WAY YOU
Move

HELPING PEOPLE
REACH THEIR GOALS,
One Step at a Time.



Therapy Services

- Outpatient Therapy
- Physical Therapy
Mon-Fri, 8 am-5 pm
- Occupational Therapy
By Appointment
- Preventative and
Wellness Services

Fit Club

- 24/7 Key-Card /
Key-Fob Access
- Commercial Grade
Cardio Equipment
- Wide Array of
Weights

Opportunity
THERAPY



103 S Main St.,
Clarksville, IA 50619
(319) 278-4321



8 Hour Van Tour of the Iowa Northern Railway / RI
Yards & Shops, Depots, Right of way
Historical information and locations
1 to 5 persons

Lunch, water and safety equipment included

5 Hour Van History Tour of Railroads in Northeast Iowa

For more information on visiting
Trains on the Farm or scheduling a tour contact:

Francis L. Edeker

319-278-4847 OR 319-415-4814

30215 170th St., Clarksville, IA 50619

fcedeker@butler-bremer.com

www.trainsonthefarm.com

Visit Trains on the Farm

FOR ALL AGES: Come on a 2 hour tour of the
Iowa Northern Railway / Rock Island and other
Railroads displayed in the buildings on the farm.

- ♦ Replica of Depot
- ♦ Railroad displays
- ♦ Railroad artifacts / Railroad signage
- ♦ Model Trains
- ♦ Toy farm machinery
- ♦ Western "HO" layout
- ♦ Dollhouse city
- ♦ MARX Toys
- ♦ Toys: 1920's to present
- ♦ "Walt Disney World" Diorama
- ♦ Small Railroad flea-market
- ♦ Civil War Diorama
- ♦ Lionel, Marx & American Flyer Toy Trains



WELCOME TO Clarksville



CITY HALL (319) 278-4531 Clarksville residents enjoy a wide variety of outdoor recreational opportunities. Volunteer city park offers a new playground, winter ice rink and access to the Rolling Prairie Bike Trail. The popcorn stand downtown is open weekend evenings during the summer. Businesses include antique stores, a quilt shop, discount store, meat market, several eateries, a convenience store, clothing boutique, and auto repair shops. Clarksville is the hometown of 2018 American Idol winner Maddie Poppe.



HEERY WOODS STATE PARK

HEERY WOODS STATE PARK

North side: 19195 Highway 188
South side: 27887 195th Street

The park provides excellent opportunities for fishing, boating, and hiking. The camping area features electrical hook-ups for 20 trailers plus a large tent area with modern restrooms and showers. There are several picnic areas throughout the park, as well as a nature center with many hands-on exhibits located on the south side of the river near the stone lodge. The park also provides direct access to the Rolling Prairie Trail.

Straddling the Shell Rock River, Heery Woods State Park contains the original tract of land belonging to the first land owner in the county. After it became a state park in 1935, workers of the Works Progress Administration were used to develop the park. They built a dam, the original shelter house, and the stone lodge located on the south side of the river. Today the park is under the management of the Butler County Conservation Board.

TRAINS ON THE FARM RAILROAD TOURS

30215 170th Street, Clarksville

Personal guided tours of several railroad sites throughout the area, including the operational Iowa Northern Railway. Go behind the scenes and view railroad yards, engine, caboose, and more. Plus see the Rock Island museum, layouts, and displays all on a farm!

By appointment only. (319) 278-4847
www.trainsonthefarm.com

HAUSER'S WILDLIFE AREA

11611 Vail Avenue, northeast corner of county

Diversity is one word that describes this 25-acre refuge. Located along a small tributary of the Shell Rock River called Beaver Creek, this wildlife refuge provides a combination of aquatic, forest, and upland habitats that support a wide variety of species.

WOLTER'S PRAIRIE PRESERVE

19155 Quail Avenue, Clarksville

In 1984, captivated by the beautiful wildflowers found there, the Butler County Conservation Board purchased the first half of this 40-acre native prairie area from John Wolters. In 1990 the local chapter of Pheasants Forever purchased the remaining 20 acres on behalf of the Conservation Board. The result is a well preserved island of native grasses and forbs that represent Iowa's past. Today this native prairie is used to teach about the natural and cultural history of Iowa.

CLARKSVILLE POPCORN STAND

101 South Main Street, Clarksville

A tradition for over 50 years, the popcorn stand has welcomed generations to downtown on weekend evenings. The popcorn stand is open Saturday and Sunday evenings from Memorial Day through Labor Day from 6 – 8:30 p.m. The stand is operated by volunteers, with proceeds going to community projects. Follow the popcorn stand on Facebook for undated information.



ROLLING PRAIRIE BIKE TRAIL

ROLLING PRAIRIE BIKE TRAIL

This 21 mile paved trail connects Clarksville, Allison, Bristow, and Shell Rock. This hard surface trail features a nice mix of natural canopy and scenic bridges. The Clarksville trailhead is located at Heery Woods State Park. There is also access at Volunteer City Park on the city's south edge (one block east of Highway 188). Both of these locations provide restroom facilities, shelter houses, and parking.

The expansion from Allison to Bristow was completed in 2018. Each of the trailheads features a kiosk with maps, trail information, and more. In the future, plans are to expand west to Dumont, once funding is secured.

A bike repair station is available at the Volunteer City Park trailhead.



NEW DOWNTOWN MURAL

CLARKSVILLE SPLASHPAD & VOLUNTEER PARK

1100 South Mather Street, Clarksville • (319) 278-4531

The splashpad includes 10 water features for children to cool off on hot summer days. The facility is open 9 a.m. to 9 p.m. daily, and admission is free. Parents can relax on one of the many benches and tables nearby, including some with umbrellas and solar charging stations for all of your devices. Volunteer Park offers restrooms, shelter houses, ballfields, sand volleyball, basketball courts and much more. The park is adjacent to the Rolling Prairie Bike Trail. Completed in 2019, it was updated with a playground with new structures and overhead play equipment that is a fun adventure for kids of all ages and abilities. Also new for wintertime fun is an ice skating rink. This 124 by 44 foot facility is available during daylight hours weather permitting.

CLARKSVILLE GOLF COURSE

**C.A.R.D. Country Club: (9 holes)
Highway 188 South, Clarksville
(319) 278-4787**



ALLAN AND FAYETTE MEYER NATURE CENTER

ALLAN AND FAYETTE MEYER NATURE CENTER

27887 195th Street, Clarksville

The Nature Center was originally built in 1988, and it is currently undergoing an expansion and renovation project. While the exhibit and display area is currently closed for the project, the grand reopening is projected to take place in 2023 as funding allows. We are still accepting donations toward exhibit and display development. The nature center is the hub of the Butler County Conservation Board, where visitors can find exhibits and displays about local flora and fauna, the parks history, and live animals from the area. The Butler CCB offers year round environmental education for schools, youth, special interest groups, and the public. You can schedule a presentation for your group by calling 319-278-4237 or e-mailing butlernaturalist@butler-bremer.com. All public events, park information, and updates will be advertised on the Butler County Conservation Board Facebook page, mycountyparks.com, in local newspapers and on local radio stations. If you would like to have information sent directly to you electronically, use the e-mail above to sign up for the newsletter.

SPORTSMAN PARK

27588 180th Street, Clarksville

Located on the west edge of Clarksville on Superior Road, this park has undergone many changes. It was the site of the cabin of the first settlers in Butler County, and it was later used to provide fill to build the railroads across the county. Today, the park provides an excellent opportunity for family enjoyment. The 6-acre lake, picnic shelter, and playground offer something for all ages.

LEEPER'S PRAIRIE PRESERVE

21657 Ridge Avenue, Clarksville

Donated to the county by Doris Leeper in memory of her late husband, this 41-acre prairie area is a remnant of what once covered most of Iowa. Management of the area is limited to tree removal and periodic spring burning. These practices will help to ensure that the many prairie plants found there will continue to thrive and endure.

CLARKSVILLE HISTORY MUSEUM

103 West Greene Street, Clarksville

Visit the Mark Pulis History Room, named after the 1932 Clarksville alumnus. The room is full of Clarksville historical artifacts, memorabilia, CHS class pictures, a schoolroom, and items from Clarksville businesses and organizations past and present. Located in the (handicapped accessible) lower level of the Clarksville Public Library, the room is open to the public during the Library's regular business hours: Monday and Wednesday 10 a.m. to 6 p.m.; Tuesday and Thursday 10 a.m. to 5 p.m.; Friday 10 a.m. to 4 p.m.; and Saturday 10 a.m. to 2 p.m.



Welcome to Clarksville!

Our *Top 5 Tips* for healthy travel:

- 1 Use sunscreen and insect repellent.
- 2 Get plenty of rest.
- 3 Wash your hands often.
- 4 Drink enough fluids.
- 5 Bring along a travel medical kit.



If you need medical or dental care during your visit, give us a call!



PEOPLES
Clinic Butler County

319.278.9020
118 South Main Street
Clarksville
www.peoples-clinic.com



NEW DAY DAIRY GUESTBARN

NEW DAY DAIRY GUESTBARN

31000 175th Street, Clarksville • (319) 278-4455

www.newdaydairy.com

Find New Adventures, Authentic Cows, and Comfy Beds at when you #sleepwiththecows at Iowa's only FarmStay on a working dairy farm! 24/7 access to two large loft windows looking directly into the Bolin family's barn. Cow gaze at the 120 milking cows enjoying life and then meet them up close on an Intro & Farewell Tour. Meet Rita the robot who milks the cows and pet a baby calf! As a vacation rental property (with three bedrooms & bathrooms), you'll be the only ones sleeping with the cows.

For a more hands-on tour try the "Be A Dairy Farmer" Challenge - you'll ride in the tractor, bottle feed calves, milk a cow by hand, get in among the cows to scrape manure, and peek under Rita's hood. Take an exclusive t-shirt home to prove you can be a dairy farmer!

Just passing through? Small group tours are available to non-guests. Check our website for more info & to book your night with the cows! Winner of Travel Iowa's 2022 Outstanding Rural Lodging Award"



CLARKSVILLE CONCERT IN THE PARK

HOGENCAMP WILDLIFE AREA

Highway 3, Clarksville

This newly acquired wildlife space is a 39-acre public hunting area located between Union and Terrace Avenues on the north side of Highway 3. With dry upland areas, cattail-rich wetlands, and a small pond, the Hogencamp Wildlife Area is diverse enough to provide critical habitat for both game and non-game species throughout the year. The area was purchased in 2017 by the Butler County Conservation Board using a State Habitat Stamp Grant and donations from Pheasants Forever chapters in Butler, Bremer, Black Hawk, Chickasaw, Grundy, Floyd, and Franklin Counties, and from the State Pheasants Forever organization.



CLARKSVILLE PUBLIC LIBRARY

103 West Greene Street, Clarksville

Phone & Fax (319) 278-1168

clarksvillelib@butler-bremer.com

The Clarksville Public Library offers a variety of quality materials, which will meet your educational, informational, cultural, and recreational needs. With over 20,000 titles available, magazines, movies, and audiobooks—there's something for everyone. If you have a special request, please let the staff know, and they'll be glad to help you find it.

The library offers six public access computers, Wi-Fi, copy and fax services, a private meeting room, proctoring service, BRIDGES e-book and audiobooks. The Genealogy Room holds a large collection of Butler County and Clarksville genealogy resources, and also a computer with the digitized Clarksville Star newspapers from 1872 to 2016 (available during the library's regular business hours). The Clarksville History room is also open during regular hours and is full of Clarksville history and memorabilia!

Youth programming includes the Circle of Friends weekly Story for infants to Preschoolers—parents, grandparents and caregivers are welcome to stay and join the fun (please call for day and time)! School-aged kids enjoy crafts and game days, Wonderful Wednesday activities, and a variety of special events and programs during the year. Our Summer Reading Program is during the month of June. Summer Story Times, Lego Days, STEM Club, and kids' book club are also offered during the summer.

For adults, the library offers a monthly book club, and a variety of other programs, workshops, and classes throughout the year.

Items can be renewed in person, by phone or email! Search for books at home with our On-line Card Catalog at www.clarksville.lib.ia.us

Look for Clarksville, Iowa Public Library on Facebook to keep up with new materials and all the current happenings at the library!

Please let us serve you on: Monday and Wednesday 10 a.m. to 6 p.m., Tuesday and Thursday 10 a.m. to 5 p.m., Friday 10 a.m. to 4 p.m. and Saturday 10 a.m. to 2 p.m.

Serving Parkersburg and Butler County

MidWestOne Bank

1001 IA-57 Parkersburg IA 50665 | 319-346-1645

In Butler County we are...

BUILDING A #STRONGIOWA

Butler County
320 N Main St, Po Box 368
Allison, IA 50602
(319) 267-2707

www.extension.iastate.edu/butler

This institution is an equal opportunity provider. For the full non-discrimination statement or accommodation inquiries, go to www.extension.iastate.edu/diversity/text.

IOWA STATE UNIVERSITY
Extension and Outreach



WELCOME TO _____ *Dumont*



DUMONT COMMUNITY LIBRARY

602 Second Street, Dumont • (641) 857-3304

www.dumont.lib.ia.us

The Dumont Community Library offers books, magazines, local newspapers, movies, music CDs, and audiobooks for patrons to enjoy. The library is a member of BRIDGES, which allows patrons to download e-books and expands the library's audiobook collection. Learning Express Library 3.0 and EBSCOhost are additional online resources offered by the library.

Other services provided are inter-library loan, a disc repair machine, fax and copy machine, proctoring service, Wi-Fi and seven public access computers.

A meeting room is available to rent with multimedia and overhead projectors, a TV/DVD/VCR and small kitchen.

Programs at the Dumont Community Library include Movie Day for Adults on the second and fourth Thursday of the month in the Brown Center starting at 1 p.m. Book Club discussions are held the first Thursday of the month at 7 p.m. The Friends of the Library meet bimonthly on the second Tuesday at 4 p.m. Both groups would be happy to welcome new members.

Lego League is every Wednesday during the school year 2 – 4 p.m. S'mores Storytime for preschoolers is Thursday from 3 – 3:30 p.m., and Thursday Things children's program is every Thursday during the school year 4 – 4:45 p.m.

The library offers a summer reading program during the months of June and July for children and teens. Special programs such as author visits, outdoor movie night and computer help are held throughout the year.

Library hours are Monday and Tuesday 1 – 5 p.m., Wednesday and Friday 9 a.m. to noon and 1 – 5 p.m., Thursday noon – 7 p.m. and Saturday 9 a.m. to noon.

LAKE CONSIDINE

15509 230th Street, Dumont



The major use of this area is fishing and hunting. The majority of the area provides excellent hunting opportunities for deer, turkey, squirrel and duck. The West Fork River and small pond provide fishing opportunities for many different fish species. Since most of the pond is privately owned, we ask that you respect private property in this area.

CITY HALL (641) 857-3411 Businesses includes a grocery store, convenience store, bowling alley, restaurants, bar and grill, and auto service. The city park offers a shelter house, playground, and restrooms, plus lots of beautiful shade for your picnic. On Wednesday and Saturday evenings in the summer you can visit an old fashioned popcorn stand downtown.

NORTH BUTLER WILDLIFE AREA

The North Butler Wilderness Area is located north of Dumont on the southeast corner of T16 and C33. The original 150-acre area was purchased by the local Pheasants Forever Chapters with a grant from the Iowa Habitat Stamp program, and in 2014 an additional 76 acres were added with grants and the help of the Iowa Natural Heritage Foundation. The area is enrolled in the Wetland Reserve Program and is mostly grassland with a small amount of timber. The West Fork River runs through the southwest side of the property. This combination of habitats provides hunters with opportunities for upland game, deer, and early season duck.

SOUTH FORK PARK

South Fork Access

21045 Cedar Avenue, Dumont



South Fork Park has much to offer despite its small size. Only 20 acres in size, the area offers access to the South Fork of the West Fork River and a 3-acre lake stocked with bass, bluegill and yellow perch. In addition to its fishing resources, the area provides a small variety of upland and forest type resources for hunting. Primitive camping is allowed, but no water or toilet facilities are available.



DUMONT POPCORN STAND

Main Street, Downtown Dumont

Open May through August. Hours are Wednesday and Saturday 6:30 – 9 p.m.

BOYLAN CREEK WILDLIFE MANAGEMENT AREA

15404 Highway 3

Purchased using Habitat Stamp Money and with help from the local Pheasants Forever and Ducks Unlimited Chapters, this 369 acre area is located just south of Bristow on Highway 3. This area features excellent hunting for upland game birds, wild turkey and white tailed deer. For the trapper, the creek, timber edges, and fence lines provide excellent runways for many furbearers. The Boylan Creek Wildlife Management Area has been enhanced with food plots, tree and shrub plantings, and nesting areas for wildlife. These enhancements provide for the needs of wildlife throughout the year.

COMMUNITY BOWL

518 Main Street, Dumont

(641) 857-3787

A six lane community bowling center that offers men's, women's, mixed leagues, and open bowling. A snack bar with pizza is also available. Call for more information and hours. A full service restaurant is located adjacent to the bowling alley.



NIGHT OF DESTRUCTION - BUTLER COUNTY FAIR

FABER MEMORIAL WILDLIFE AREA

24260 Forest Avenue, Dumont

Donated by former board member Herman Faber, this twenty-eight acre wildlife refuge provides wildlife habitat for a variety of game and non-game species. Enhancements to the area include a replanted prairie, wetland, and wildlife food plots.

EISENTRAGER WILDLIFE AREA

Acquired in 2021, the Eisentrager Wildlife Area is located approximately 2 miles south of Dumont – northwest of the intersection of Douglas Avenue and 240th Street. A part of the Cedar River Watershed, the 116 acres of land contains a sedge meadow, remnant wetlands, and upland grassland. The property is open for public hunting and provides habitat for a variety of wildlife species, including game and non-game species. Species observed on the property include: Ring-necked Pheasant, Eastern Cottontail, Red Fox, Coyotes, Canadian Geese, Teal, Mallard, River Otters, Wild Turkey, White-tailed deer, and other furbearers. The Butler County Conservation Board used a REAP Grant and donations from Pheasants Forever Chapters of Butler, North Butler, Floyd, Franklin, Bremer, Mitchell, and Cerro Gordo Counties to acquire the property.



GRINNELL
MUTUAL

SMC Ins Inc.

DBA

HARRISON-THORNBURGH INS. INC.

641-857-3413

600 Main St., Dumont • htins@netins.net

A History of Excellence



**Your Hometown Dealer
For 60 Years**

COOPER MOTORS, INC.

Allison, IA

Ph 319.267.2392 • Fax 319.267.2622

Email: coopermotors@netins.net

coopermotorsiowa.com

ELECTRICAL SAFETY CHECKLIST

Electrical safety should be everyone's priority.

To see the full monthly checklist visit:

butlerrec.coop/content/electrical-safety-checklist

1 BATHROOM

All electrical appliances are used away from the sink, tub, toilet and/or shower.

2 KITCHEN

Back of refrigerator has room for air circulation and its coils are free of dirt and buildup.

3 BASEMENT

Standard circuit breakers have been inspected, and you've considered talking with your licensed electrician about replacing with Arc Fault Circuit Interrupters (AFCIs).

4 FAMILY ROOM

All electrical equipment (lamps, electronics, etc.) are being used without the use of extension cords.

5 BEDROOM

No electrical cords are resting under rugs or furniture.

6 GARAGE

All storage boxes are placed away from wiring and plugs.



Butler County REC

Your Touchstone Energy® Cooperative
Allison, Iowa

521 N Main St, Allison, IA 50602
319-267-2726 • www.butlerrec.coop



WELCOME TO — *Greene*

WUNSCH MEMORIAL PARK

Rowley Street, Greene

Located just below the dam along the Shell Rock River in Greene is the 1.2 acre Wunsch Memorial Park. A popular area, this park offers electricity, running water, access to the river, and a boat ramp. It also includes 10 electrical camp sites and a new shelter house. Water above the dam is deep enough for pleasure boating. The location of this area is within easy walking distance of shops, museums, and the city park.



GREENE GOLF COURSE

Round Grove Country Club (9 holes)

20498 Floyd Line Street
(641) 816-5621



GREENE PUBLIC LIBRARY

231 West Traer, Greene • (641) 816-5642

www.greene.lib.ia.us

The Greene Public Library has available for all patrons books, magazines, newspapers, CDs, movies, audio books, cake pans and puzzles. We have nine public access computers, Wi-Fi, a fax machine, color copier, in-house and digitized microfilm of the Greene Recorder, BRIDGES and Inter-Library Loan. A meeting room that is ideal for small groups offers a Smart TV with DVD player, multi-media projector and fully equipped kitchen.

Youth programming includes Story Hour every Saturday morning at 10 a.m. from October through March, Summer Reading Program in June, visits to Greene daycare centers and an active Teen Board Advisory Group. Examples of classes offered are hunter safety, computer and e-book training, cooking and babysitting. The library offers a monthly book club, test proctoring service and the ability to access library information through our website at www.greene.lib.ia.us and Facebook page. Special events are book signings, an annual Christmas Open House and specialized children's parties.

We deliver library materials to homebound Greene residents. Monthly collections are featured in our display case and homemade quilts are displayed and rotated monthly.

Library hours are Monday 12 - 8 p.m., Tuesday 9 a.m. to 5 p.m., Wednesday 12 - 8 p.m., Thursday 9 a.m. to 5 p.m., Friday 9 a.m. to 5 p.m. and Saturday 9 a.m. to 3 p.m.

GREENE SWIMMING POOL

Aquatic Center • 205 West Rowley Street • (641) 816-3020

CITY HALL (641) 816-4631 Greene residents enjoy boating and other activities on the Shell Rock River as it winds its way through town. Perrin Park is located along the river near downtown and offers two shelter houses, a gazebo, tennis courts, and a boat ramp. The charming business district offers a landmark department store, bakery and coffee shop, grocery store, variety store, auto parts, hardware, convenience store, eateries.



FREEDOM ROCK

BUTLER COUNTY FREEDOM ROCK

102 West Traer Street

Painted in 2016 by Ray "Bubba" Sorensen. The Iowa Freedom Rock tour was started to spread the message of thanking our Veterans while providing a unique tourism attraction in all of Iowa's 99 counties. The rock is located in a small park-like setting, adjacent to the Shell Rock River, in downtown Greene.

FREEZE FRAME BOWL

3064 Highway 14, Greene • (641) 816-2695

Modern six lane community bowling center that offers men's, women's, mixed leagues, open bowling, and cosmic bowling. You will also find a full service restaurant plus arcade games and billiards. Please visit their website for more information and hours. www.freezeframebowl.com

The Red Power Team can ensure your running in the field efficiently and consistently.

CASE IH
AGRICULTURE



Advanced Farming Systems
State of the art tools and equipment
Factory trained service technicians
Family owned, Team Centered, Customer Focused

McRoberts Red Power

3080 Hwy 14, Greene, IA 50636

641.823.4154 • www.redpowerteam.com

RED POWER
Team



CAMP COMFORT REC AREA

CAMP COMFORT RECREATION AREA

23525 Camp Comfort Road

This 27-acre area is one of the most popular areas operated by the Conservation Board. Located south of Greene and east of Highway 14 along the Shell Rock River, this park offers excellent recreational opportunities. Fishing for walleye and smallmouth bass below the dam is excellent as is fishing for catfish above the dam. The area has boat ramps and canoe access both above and below the dam, a large shelter house, and camping facilities with electricity for 25 trailers as well as an area for tents.



SKILLEN'S CORNER HABITAT DEMONSTRATION AREA

Intersection of C13 and T24, Greene

Located at the intersection of C13 and T24 is the Skillen's Corner Demonstration Area. Designed as a teaching area, the Butler County Conservation Board staff has planted trees, shrubs, and prairie grasses to demonstrate how good planning and proper maintenance can help enhance wildlife habitat.

Black Sheep Coffee Baa

Where *community* is valued,
great coffee and
good food are
enjoyed,
and every aspect
of life is *respected*.

Homemade Pie Fridays!
Fresh Bread & Baked Goods Everyday!
Online Ordering
Curbside Delivery Available

115 E Traer St. • Greene, IA
641-816-3102
blacksheepcoffeebaa.com
Tues. & Thurs. 6 am-1 pm
Wed. & Fri. 6 am-4:30 pm
Sat 7 am-1 pm
Connie Debner, Proprietor

Greene Community Center
Welcomes

- Business Seminars
- Conventions
- Wedding Receptions
- Reunions
- Organizations
- Retreats

Greene Community Center
Offers

- Hospitality & Service
- Full Bar & Kitchen
- Room for 250-300 people with additional available seating

Call for reservations:
641-816-4631
202 West South St., Greene, IA 50636
Located at the intersection of Hwy 14 and C13

Highway 57 Auto
Ford
PARKERSBURG, IA

Your Source for Ford In Parkersburg
1308 HWY 57 • PARKERSBURG, IA
319-346-1026 • WWW.HIGHWAY57AUTO.COM



WELCOME TO New Hartford

NEW HARTFORD MOTORCYCLE RACING County Road T-55, north of New Hartford

Flat track and MX motorcycle racing facility. Holds regular racing events throughout the summer months with camping area available. Call (319) 885-NHMX (6469) for information or visit www.newhartfordracing.com



ELIZABETH RASMUSSEN MARTIN MEMORIAL LIBRARY

406 Packwaukee Street, New Hartford • (319) 983-2533

The Elizabeth Rasmussen Martin Memorial Library is located at 406 Packwaukee Street, New Hartford, Iowa. We are open Tuesday, Wednesday and Friday from 11 a.m. to 6 p.m., Thursday from 11 a.m. to 4 p.m., and Saturday from 10 a.m. to 2 p.m. Our website is: www.newhartford.lib.ia.us or find us on Facebook at Martin Memorial Public Library. Our phone number is (319) 983-2533.

Our children's room is a favorite with many books, a kid's computer, child-sized furniture and many movies for children. The Summer Reading Program is always a big event.

The New Hartford Woman's Club has established a Historical Room inside the library. Due to donations from local historian Vopal Youngberg, the room is filled with a wealth of information about New Hartford and the surrounding areas. New Hartford school yearbooks go back as far as 1917. There are many old photographs and newspaper clippings. Summer always brings visitors from across the U.S. looking for ancestors in our historical room.

CITY HALL (319) 983-2548 The town of New Hartford is only a few minutes from Waterloo/Cedar Falls. New Hartford is also the home of U.S. Senator Charles Grassley. You will find a bar & grill, a convenience store, auto repair and more.



MEDITATION GARDEN

THE CITY OF GARDENS

The City of New Hartford has ten amazing parks and newly created public gardens. The Heritage Garden offers a glimpse into the past. The Four Seasons Perennial Garden is a great place to just relax and enjoy nature. The Fruit Tree Orchard was created after winning a nationwide contest sponsored by Edy's Fruit Bars and the Fruit Trees Planting Foundation. Designed by one of our own, the Veteran's Memorial Garden speaks for itself. This garden is a breathtaking salute to our country's heroes. The Community Gardens allow those yummy vegetables to be grown. The Town Square Gazebo Garden is a stunning place to hold a variety of events. It is especially beautiful for weddings. The Meditation Garden is designed to reflect on the past, present and future. It honors those lives lost in Butler County during the 2008 deadly EF5 tornado. The newest park is the Log Cabin Learning Center. This design is in remembrance of Joe Dennis' legacy. He would sit on his log cabin porch for hours playing his guitar, bringing in listeners of all ages. This new addition offers a meeting room, including restroom amenities and an outside fire pit surrounded by swings. The Family Park is another great place where horse play is encouraged. Packwaukee Park hosts a continuous stream of all ages showing off their volleyball, basketball, softball and baseball talents. It also accommodates the community events. Self-guided tour maps are available at each garden and outside City Hall. Private tours can also be arranged. All gardens and facilities are handicapped accessible, and restrooms are available. For more information call (319) 983-2548.

MOORE'S ACCESS

29988 Trapper Road

Designed in 1997 as a walk in area only, Moore's Access provides access to Beaver Creek. A small open area located along the creek and walk in access make the area a good choice for beginning a backpacking trip. The stream allows good early-season waterfowl hunting as well as fishing for small mouth bass and catfish.



PARKERSBURG PHARMACY

226 3RD STREET, PARKERSBURG, IA 50665



- Home Decor & gifts
- Travel-sized Items
- Office/Mailing Supplies
- Russell Stover Chocolate
- Greeting Cards
- Health & Beauty
- Puzzles



**FREE DELIVERY
IN PARKERSBURG
& APLINGTON
IN CITY LIMITS**

Hours: Mon.-Fri. 8:30 am-5:30 pm, Sat. 8:30-Noon
Phone: (319) 346-1970 • Fax: (319) 346-1585

Caring for you and about you.

SCHOEMAN NATURE AREA

29752 Highway 57



Schoeman Nature Area is a wetland/upland complex, which includes a variety of cool season grasses and wetland vegetation. The area boasts two shallow ponds and a wetland with mowed hiking trails throughout. Habitat improvements have included establishment of prairie, oak savanna and wildlife food plots. You will also find an approximately 300 foot raised boardwalk to get you above the wetland for wildlife viewing.

HELT MEMORIAL PRESERVE

32817 Spring Avenue, New Hartford

This 25-acre area was donated to the Conservation Board by the estate of the late Donald Helt. Placed in the CRP program in the 1980s, the area was primarily brome and timothy with a few cedar trees planted along one area. Since its acquisition, it has been enhanced with prairie grasses, a food plot, and tree plantings. These improvements have greatly increased the types and numbers of wildlife species using the area.



MURAL

A Loving Tribute

...to one who
is gone, but
who will never
be forgotten




LUHRING
MONUMENTS

Quality that lasts. Since 1983.

504 Hwy. 57, Parkersburg, IA
319-346-1445
luhringmonuments.com



AUTO PARTS

TRUSTED PARTS & SERVICE

...YESTERDAY, TODAY AND TOMORROW

Monday-Friday 8-5, Saturday 8-12
202 4th Street • Parkersburg, IA 50665
(319) 346-2103
Chad and Nikki Oldenburger, Owners



WELCOME TO

Parkersburg

CITY HALL (319) 346-2262 A vibrant city with much to do no matter what the season: four city parks, two golf courses, a campground, abundant shopping, a variety of restaurants and a motel. Visit www.parkersburgia.com for more information.

PARKERSBURG GOLF COURSES

Beaver Meadows Golf and C.C. (9 holes)

Highway 14 North • (319) 346-1870

Legend Trail Golf Course (9 holes)

Highway 57 East • (319) 346-1499



THE BIG MARSH WILDLIFE AREA

The Big Marsh is Iowa's largest marsh area, located six miles north of town boasting over 3,000 acres for public hunting, fishing, bird watching and hiking. The Big Marsh is a hunter's paradise during hunting season. It is located along Highway 14 north of Parkersburg.

PARKERSBURG SWIMMING POOL

110 Colfax Street, Parkersburg • (319) 346-2547



MIRACLE PARK

MIRACLE PARK

102 Colfax Street, Parkersburg

Located on the west side of town, Miracle Park is a premier outdoor recreational attraction. It encompasses two expansive and separate playground areas, one for younger children (2–5 years old) and another for older children (5–12 years old). Miracle Park is one of the top outdoor playgrounds in the Midwest. Miracle Park also includes three shelter houses, concrete basketball courts, and a granite Veterans Memorial.

SCHWARTZ MEMORIAL PARK

Schwartz Memorial Park is a new park on the east end of town. Located on Newell Avenue, the park has new playground equipment, gazebo, walking path, and a pond for fishing.

BEAVER MEADOWS PARK

32078 Highway 14, Parkersburg

Tucked between Beaver Creek and Beaver Meadows Golf Course, this 32-acre area was once a state park. Today the park is managed by the Butler County Conservation Board and offers a wide variety of recreational activities. Fishing for smallmouth bass, catfish and northern pike is good in Beaver Creek. Traditional golfers can access Beaver Meadows Golf Course and disc golf players can try their skill on the 9-hole course within the park. The camping area at Beaver Meadows provides 50 amp service for up to 16 campers, flush toilets, showers, and two shelter houses. Visitors to Beaver Meadows are also within walking distance of the downtown business district.



PICKLEBALL COURTS

PICKLEBALL COURTS

110 Colfax Street, Parkersburg

New to Parkersburg are brand new pickleball courts. There are four courts which are free and open to the public. If you have never played, Pickleball is a paddleball sport (similar to a racquet sport) that combines elements of badminton, table tennis, and tennis. It truly is fun for the whole family, and is becoming a very popular activity.

Join us for your next meal.
We've got the best pizza around!

Pizza
Breadsticks
Lasagna

Try Our Candy Bar
Astros, Malts, Shakes
or Specialty Sundaes.

T&L's
PIZZA PLUS +

Open: 4-9pm, Summer: 2-10pm
703 6th Street, Parkersburg
319-346-2390



PARKERSBURG HISTORICAL HOME

PARKERSBURG HISTORICAL HOME 401 Fifth Street, Parkersburg

This Victorian home was built in 1895. Visitors will enjoy the wide variety of woodwork in each room, as well as many artifacts of local history. The home features a circular tower that provides a panoramic view of the surrounding area. Open Sunday afternoons from 1 – 3 p.m. from Memorial Day through Labor Day, and by appointment.

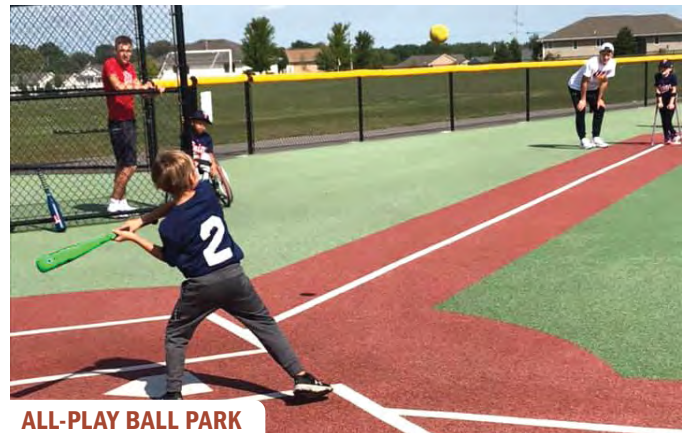
Call (319) 231-0079 for information.



KOTHE MEMORIAL LIBRARY 309 Third Street, Parkersburg • (319) 346-2442

At Kothe Memorial Library everyone can enjoy new fiction or nonfiction books in different formats, a variety of magazines and new release DVDs. If the material is not on site we use the State of Iowa Libraries Online (SILO) to obtain it for you at no cost. Our library staff strives to support lifelong reading and learning. Story time is offered for preschoolers on Wednesdays from 10 – 11 a.m. Enjoy crafts, snack, stories and fun. The Summer Reading program is held in June for all ages. The Friends of the Library group continues to support programming and materials to benefit the community and welcomes new members. The Brown Bag Book Club meets the second Monday of every month at noon to converse about their current selection, and all are welcome. On Monday nights in the library basement from 6-7:30 p.m. the Clothes Closet is open to assist those in need. Our library staff strives to support lifelong reading and learning. The library is open Monday and Wednesday 10 a.m. to 8 p.m.; Tuesday, Thursday and Friday 10 a.m. to 3 p.m. and Saturday 10 a.m.-1 p.m.

Libraries = Strong Communities



ALL-PLAY BALL PARK

ALL-PLAY BALL PARK 1005 Florence Street, Parkersburg

The Cedar Valley's first all-inclusive sports complex where youth of all abilities participate side-by-side as they develop and grow. The crown jewel of the Parkersburg Complex is the Miracle League field, an all-weather surface diamond that serves multiple purposes. Most importantly, it is the home of the Miracle League of Cedar Valley. The complex also includes 3 soccer fields for different age groups, 3 regulation little league diamonds, and 1 regulation senior league baseball diamond.

DEPOT PARK

This historical site is located on the north side of town. Parkersburg's old Train Station still stands; complete with an old time caboose from a passenger train. The park also boasts a shelter house, playground equipment, restrooms, and plenty of area to fish in Beaver Creek.



Making every occasion a

Special Occasion

Flower Arrangements
for All Occasions,
Green Plants, Balloon
Bouquets, Hallmark
Cards, Home Decor,
And Swan Creek
Soy Candles.
Melissa & Doug Toys.

Leah's Gift, Card & Flower Shoppe

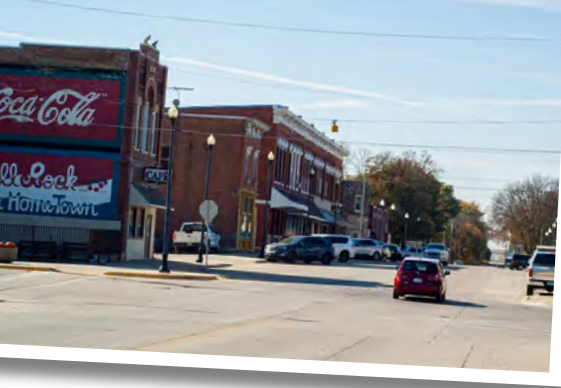
217 3rd Street, Parkersburg, IA
319-346-1465

HOURS: M 10-3
Tu-F 10-5 | SAT 10-3

BUTLERCOUNTYIOWA.COM

BUTLER COUNTY VISITOR'S GUIDE | 2023

29



WELCOME TO Shell Rock

SHELL ROCK HISTORICAL MUSEUM

127 East Adair Street, Shell Rock

Visit this 1920s Craftsman style house that is home to a large display of memorabilia from Shell Rock's history. There is an original garage on site, which is unusual for this style of house. A railroad room and a school room are part of the permanent exhibits. Visitors can also view rotating exhibits throughout the year. Open Saturdays from 10 a.m. to 2 p.m., and other times by appointment. Call (319) 885-6687.



BENNY GAMBAIANI PUBLIC LIBRARY

104 North Cherry Street, Shell Rock • (319) 885-4345

www.shellrocklibrary.org

The Benny Gambaiani Public Library offers story hour for preschoolers each Thursday evening at 6 p.m. during the school year.

We do four weeks of summer reading in July for preschoolers through junior high age students, and an annual Nite Hike (walk through the park with story tellers, crafts and treats.)

We have a science club for Kindergarten-8th Grade. We offer regular adult and kids craft days on Saturday mornings. We also offer a Stitch Club on Thursday evenings.

We have eight public access computers as well as Wi-Fi, color copier, fax, and a microfilm reader. There is a meeting room for small groups, events, meetings, or socialization with a 65-inch TV and Nintendo Switch with tons of games.

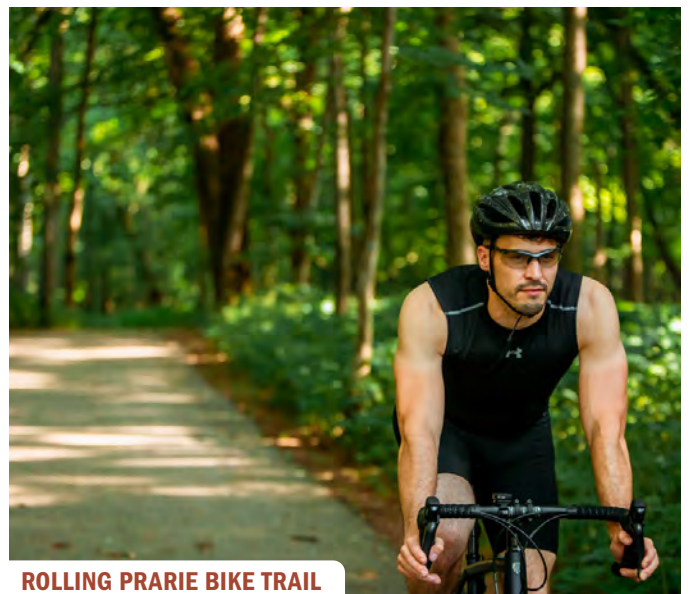
We have new DVDs monthly, adult fiction books, audiobooks, as well as magazines and children's books, and a parenting section as well. If you feel our collection is missing any books, you can request it, we are open to suggestions!

Library hours are Monday noon – 6 p.m., Tuesday 9:30 a.m. to 4 p.m., Wednesday noon – 6 p.m., Thursday noon – 8 p.m., Friday 9:30 a.m. to 4 p.m., Saturday 9 a.m. to noon.

CITY HALL (319) 885-6555 Shell Rock visitors will enjoy the beauty of the Shell Rock River. McCague Memorial Park has tennis courts, ball diamonds, and a shelter house. Hoyt Elliot Memorial Park is near the river dam. You will find a shelter house and a deck overlooking the river. Jeffrey Paul Rasmussen Memorial Park boasts a paved trail. Businesses include a convenience store, restaurants, an auto dealership and an ice cream shop downtown.

RENNING'S LANDING

Renning's Landing is a two-acre river access point between Clarksville and Shell Rock. The site is located on 205th Street, between Union and Utica Avenues. Acquired in 2003, the area features fishing access within the park and a concrete boat ramp that will allow users to launch small boats, canoes, and kayaks.



ROLLING PRAIRIE BIKE TRAIL

ROLLING PRAIRIE BIKE TRAIL

This 21-mile paved trail connects Shell Rock, Allison, Bristow, and Clarksville. This hard surface trail features a nice mix of natural canopy and scenic bridges. The Shell Rock trailhead is a quarter mile north of Highway 3 on county road T-63. There is limited parking, and no restroom facilities at this time.

The expansion from Allison to Bristow was completed in 2019. Each of the trailheads features a kiosk with maps, trail information, and more. In the future, plans are to expand west to Dumont, once funding is secured.

A bike repair station is located near the trailhead at the corner of N. Public Road and Highway 3.

SHELL ROCK WILDLIFE AREA

22562 Main Street, Shell Rock

Adjacent to the Shell Rock Recreation area is the Shell Rock Wildlife Area. This 49-acre area of floodplain forest provides valuable wetlands that are home to waterfowl, beaver, deer, and a variety of non-game wildlife.



SHELL ROCK AQUATIC CENTER

SHELL ROCK AQUATIC CENTER

614 E Jackson Street • (319) 885-6400 • Newly opened in 2021

SHELL ROCK RECREATIONAL AREA

22562 Main Street

This 40-acre area, located on the west edge of Shell Rock off Highway 3, was one of the very first areas purchased by the Conservation Board. A playground, shelter house, flush toilets and showers are just a few of its many features. The area has 30 electrical hook-ups, and the Shell Rock River offers fishing, a canoe access, and boat ramp. A lake on the west edge of the park offers fishing for a variety of species during both the summer and winter.



WEST FORK FOREST ACCESS

28376 Temple Avenue

Between Shell Rock and New Hartford

The West Fork Forest Access is a 204 acre area that provides excellent habitat for a variety of wildlife species. Open to public hunting, the area is located on both the north and south sides of the West Fork of the Cedar River and is dotted with potholes that provide opportunities for early season waterfowl hunting. Good stands of swamp white oak trees and plantings for pines and cedars provide food and cover for squirrels, deer and wild turkey. Access to the north side of the area is found on Temple Avenue while a parking area allowing access to the south side is located on County Road C-55.



SHELL ROCK KIDDIE PARADE

Roling Ford

Shell Rock, Iowa

1105 Mason Way • Shell Rock, IA 50670

319-885-4540 • Fax: 319-885-4441

www.rolingford.com

Roling Ford offers superior sales and service for our valued customers in Shell Rock, IA and the surrounding area.

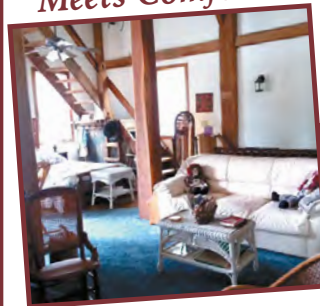
We are committed to serving our friends and customers and look forward to hearing from you.

**Come visit us at 1105 Mason Way
Shell Rock, IA 50670**



The Pals' Old Mill Bed & Bath

**WHERE HISTORY
Meets Comfort**



- Bed & Bath
- Historic Mill With Visible Hand Adze Marks
- Mortise & Tenon Joinery

Recreation Nearby:

- Bicycle trails
- Walleye Fishing
- Canoeing & Kayaking

The Old Mill was built in 1867. Located on the Shell Rock River, the mill provides river access and beautiful views inside and out. Two 1,200 sq. ft., fully-furnished (including kitchen) rental spaces available. Additional sleeping space with deck-level rental. Your whole family has the chance to experience the beauty of history in the comfort of the present.

Two-Night Minimum Stay • Total Occupancy 18+

515-491-4016 or 515-491-3585

103 N Cherry, Shell Rock, IA 50670

Photos on Facebook @ PalsOldMillSR



BUTLER COUNTY

Church Listings

ACKLEY

Washington Reformed Church
28182 Birch Avenue • (641) 847-2817
Kevin Pulliam, Pastor
www.wrcackley.org
Livestreamed on Facebook
Service Times: 9 a.m. Sunday School;
10 a.m. Morning Worship

ALLISON Bible Church

108 Pfaltzgraff Street • (319) 267-2455
Phil Butler, Interim Pastor
Sunday: 10:30 a.m. Worship
Wednesday: 7 p.m. Bible Study

Congregational Church

508 N. Main Street • (319) 267-2333
Craig Harris, Pastor
Sunday: 10 a.m. Worship Service

St. James Lutheran Church

421 N. Main Street • (319) 267-2274
Rev. Kyle Barton

Trinity Reformed Church

614 Cherry Street • (319) 267-2982
Pastor Jeremy Van Genderen
Note: Handicap Accessible
Services are broadcast live on Dumont
Cable Channel 998 and on demand at
trinref.org.

APLINGTON

First Reformed Church

905 Caldwell Street • (319) 347-2444
Rev. Brett J. Vander Berg
frcaplinton@gmail.com
Sunday: 9:30 a.m. Worship Service

Aplington Baptist Church

1003 Nash Street • (319) 347-2311
www.aplintonbaptistchurch.org
facebook.com/AplingtonBaptistChurch
Sunday: 9:15 a.m. Worship Service;
10:15 a.m. Fellowship; 10:30 a.m.
Sunday School

Hitesville Gospel Hall

17527 260th Street
Sunday: 10 a.m. Ministry of the Word;

11 a.m. Worship; 6:30 p.m. Gospel
Service
Wednesday: 7:30 p.m. Prayer Meeting
and Bible Study

AREDALE AND DUMONT

New Hope Parish

United Methodist Churches

641-857-3753
Pastor Gayle Wilcox
Aredale - Sunday: 8 a.m. Worship
Service
Dumont - Sunday: 8:30 a.m. Sunday
School: 9:30 a.m. Worship Service

BRISTOW

Church of Christ

(641) 775-3222
Dick Burlingame, Minister
Sunday: 9 a.m. Coffee and goodies;
9:30 a.m. Bible school for all ages; 10:15
a.m. Worship Service; 6 p.m. Evening
Worship
Wednesday: 6:30 p.m. Youth Group for
kids aged four to high school

Reformed Church

Cell: (515) 293-0928
Pastor Tamara Entin
tentin58@gmail.com
Sunday: 9:30 a.m. Worship

CLARKSVILLE

Community United Methodist Church

309 W. Superior Street
Community-Shell Rock
(641) 816-4256 (parsonage)
563-933-6515 (cell)
Pastor Joan Thomas
Handicapped Accessible
Sunday: 8:45 a.m. Sunday School; 9:45
a.m. Worship Service (Communion first
Sunday of each month)

Church of Christ

302 S. Elizabeth Street • (319) 278-4416
Val Swinton, Pastor
Sunday: 10 a.m. Worship Service

YOUR ONE STOP SHOP FOR ALL YOUR HARDWARE & GARDEN NEEDS

WE CARRY

**PARKERSBURG
HARDWARE
& GARDEN
CENTER**

OPEN
MON- FRI 8-6 PM
SAT 8-3 PM
CLOSED SUNDAY

504 HWY. 57
PARKERSBURG
319-346-1722

PARKERSBURGHARDWARE.COM

BEGIN YOUR ADVENTURE TODAY!

**Camping & Backpacking Supplies • Canoes
Kayaks • Snow Shoes • Cross Country Skis**

Only **MINUTES** away from all of the
outdoor nature areas in Butler County.

WE OFFER KAYAK RENTALS!

319-352-9129
207 E. Bremer Ave
Waverly, Iowa 50677

Immanuel United Church of Christ

203 S. Mather Street • (319) 278-4224
Pastor Jim Brown
Services are held September through May at 10 a.m. with Sunday School for all ages at 9 a.m.

During June, July, August
Sunday worship at 9:30 a.m. with a coffee and fellowship time to follow.

St. John Lutheran Church

204 N. Washington • (319) 278-4765
Pastor Charles R. Underwood
Handicap Accessible
Sunday: 9 a.m. Sunday School;
10 a.m. Worship

DUMONT

Reformed Church

(641) 857-3514
Pastor Chris Meester
Sunday: 9 a.m. Sunday School for ages 3 through high school; 10 a.m. Worship (nursery care provided), Communion on the first Sunday of each month
Mondays: First Monday of the month; 1 p.m. Reformed Church Women (RCW)
Wednesday: 7 p.m. RCYF (High School Youth Group for 8th-12th grade)

GREENE

First Presbyterian Church

319 East Traer Street
Cathy Belles, Pastor
bellescatherine@gmail.com
Sunday: 10:30 a.m. Worship, All are welcome!

St. Mary's Catholic Church

105 N. Main Street • (641) 823-4146
Fr. Ralph Davis
Sunday: 10 a.m. Mass.

St. Peter Lutheran Church

324 E. Traer Street
Daniel Flucke, Pastor
(641) 816-5531
Sunday: 8:30 a.m. Traditional Worship;
9:45 a.m. Sunday School/Luther League; 11 a.m. Praise Worship

Calvary Baptist Church

312 S. Main Street • (641) 257-8148
Pastor Ben Hartwig
calvarybaptistgreeneiowa.org
9:30 a.m. Sunday School
10:30 a.m. Morning Service

NEW HARTFORD

United Methodist Church

406 Onieda Street • (319) 983-2322
Chan Kim, Pastor
Sunday: 9 a.m. Worship; 9:15 a.m. Sunday School; 10 a.m. Fellowship
Thursday: 9 a.m. Bible Study

PARKERSBURG

Bethel Lutheran Church

701 Third Avenue • (319) 346-2028
Pastor Kent Wallace
www.bethelparkersburg.org
bethelparkersburg@gmail.com
Sunday: 9 a.m. Worship; 10:15 a.m. Sunday School and Adult Bible Class

United Methodist Church

Chan Kim, Pastor
Sunday: 9:15 a.m. Sunday School;

10:30 a.m. Worship Service;
11:30 a.m. Fellowship
Wednesday: 10 a.m. Bible Study
Thursday: 9:30 a.m. Shine Disciples Bible Study

Faith Lutheran Church

608 Sixth Street • (319) 346-1451
Pastor Sean Scheele
faithparkersburg.wixsite.com/
faithparkersburg
Sunday: 11 a.m. Worship Service

First Congregational Church

401 Third Street • (319) 346-1373
firstcongregationalparkersburg.com
Teachings & Missions Pastor:
Brian Koelsch
Shepherding Pastor: Martin DeWitt
Sunday: 8 a.m. Worship; 9:20 a.m. Sunday School; 10:30 a.m. Worship

PLEASANT VALLEY

First United Church of Christ

31015 150th Street, Clarksville, IA 50619
(319) 276-4443
Rev. Peter Wenzel
September through May worship services are at 10 a.m. with Sunday School at 9 a.m.
June through August worship services are at 9 a.m. with no Sunday School.

SHELL ROCK

United Methodist Church

204 S. Prairie Street • (319) 885-4554
Pastor Joan Thomas
Sunday: 8:30 a.m. Worship Service.
(Communion first Sunday of each month)

Peace Lutheran Church (LCMS)

121 East Washington • (319) 231-9761
Pastor Michael Knox
and Emmett Bartens, Vicar
Saturdays: 6 p.m. Bible Class;
7 p.m. Worship

Faith Lutheran Church

422 N. Prairie Street • (319) 885-4547
Pastor Kim Smith
faithsr@butler-bremer.com
Sunday: 9 a.m. Worship Service;
10 a.m. Sunday School; 10:15 a.m. Contemporary Worship Service.
Wednesday: 7 p.m. Evening Worship Service.

VILMAR

St. John's Evangelical Lutheran Church-Vilmar

16073 Keystone Avenue, Greene
(319) 267-2080
Pastor Christopher Martin
Handicap Accessible
www.vilmarchurch.org
September-May: 8:45 a.m. Sunday School; 10 a.m. Worship Service
June-August: 9 a.m. Worship Service;
No Sunday School
Holy Communion served the first and third Sundays

Coming Soon!



GREEN BELT
BANK & TRUST



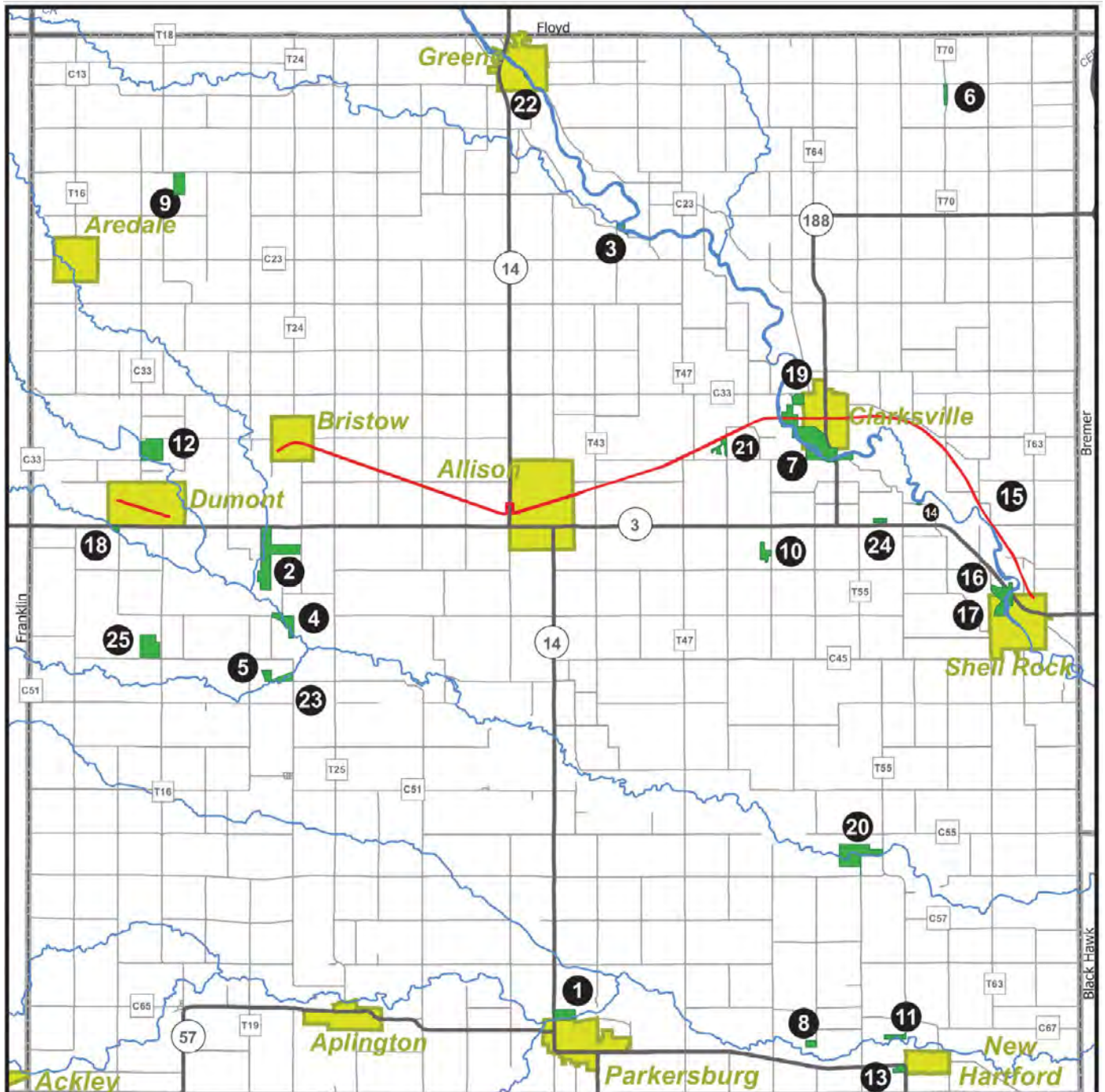
Green Belt Bank & Trust is Moving to Parkersburg Mobile Banking will be available in November Grand Opening Summer 2023

We look forward to serving Butler County!



BUTLER COUNTY

Conservation Areas



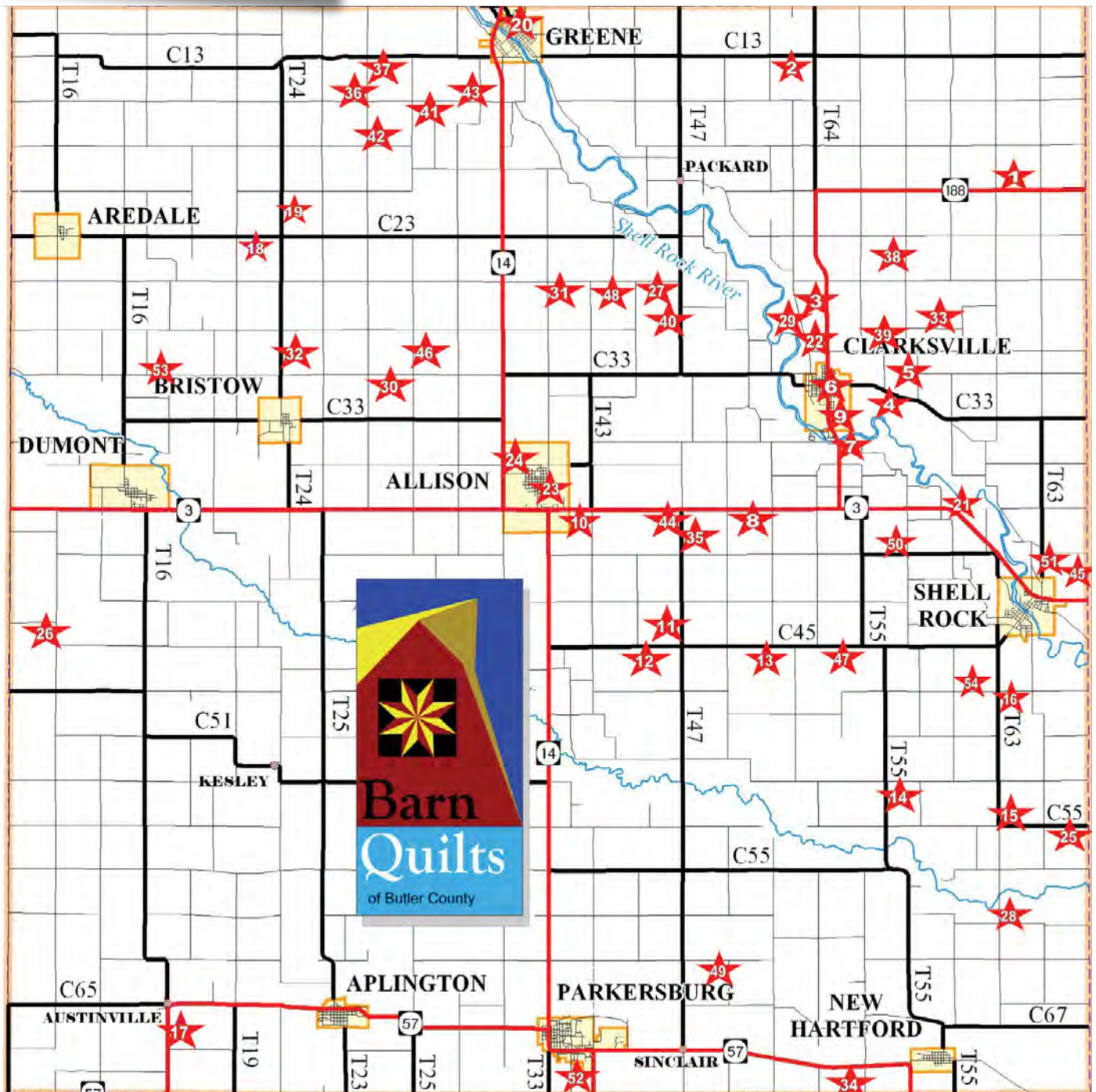
Butler County

Butler County														
	ACREAGE	CAMP SITES: Electric Full Hookup Non-Electric Equestrian Youth Dump Station WiFi	WATER: Drinking Showers	TOILETS: Flush Vault	CABIN RENTAL: Seasonal Year Round	SHELTER: Endoset Open Free Rental	PICNICKING	TRAILS: Bike-Hard Surface Limestone M. Bike Water Equestrian Hiking Snowmobile XC Ski Groomed	SWIMMING: Beach Pool	FISHING: Jetty Pier Lake (acres) Stream or River Trout	BOATING: Canoe Electric Motor BR-Boat Rental Ramp	SPORTS: Archery Baseball Disk Golf Golf Horseshoe Ice Skating Playground Shooting Ranges Sledding Tennis Winter Sports	SITES: Amphitheater Arboretum Bird Watching Wildlife Exhibit Historic Site Nature Center Prairie Wetland Woodland	HUNTING: Forest Upland Wetland
1. Beaver Meadows Park 32078 Hwy. 14, N edge of Parkersburg	32	E16, N10	D, S*	F*		OF2 P			S	C	G, P, D	B, Wo		
2. Boylan Creek Wildlife Area 1504 Hwy. 3, Bristow	369						H, E					P, B, Wo		W, F, U
3. Camp Comfort 23525 Camp Comfort Rd., 4 mi. SE Greene	20	E19, N10	D	F		OF1 P			S	M, C, R	P	B, Wo		
4. Considine Lake 1550 230th St., Bristow	90					P			L20, S	C, E		B, Wo		F
5. Faber Memorial Preserve 24260 Forest Ave., 6 mi. S of Bristow	28											W, P, B		
6. Hauser Wildlife Area 11611 Vail Ave., 8 mi. E of Greene	25											P, B		
7. Heary Woods State Park 19195 Hwy. 188, Clarksville	380	E20, N15, Eq	D, S*	F*		ER1* OF2*	H3, E2, B1, X3, S		S	M, C, R	P	N, E, P, B, Wo		
8. Helt Memorial Preserve 32817 Spring Ave., 3 mi. NW of New Hartford	25											P, B		U
9. Kyle Wildlife Area 13286 130th St., Greene	79											B		
10. Leeper Prairie Preserve 21657 Ridge Ave., Clarksville	41											P, B		
11. Moore's Access 29988 Trapper Rd., 2 mi. NW of New Hartford	35								S			B, Wo		F
12. North Butler Wilderness Area. 1 mi. N of Dumont	227											P, B		F, U
13. Paul Schoeman Nature Area 29752 Hwy. 57, New Hartford	27											W, P, B		
14. Renning's Landing 30207 205th St., Shell Rock	2								S	M, C, R				
15. Rolling Prairie Trail 15 mi. trail N edge of Shell Rock to E edge of Allison	347					P	H15, B15, X					P, B, Wo		
16. Shell Rock Park 22582 Willow Ave., Shell Rock	67	E27, N15	D, S*	F*, V		OF1 P			P*, L3, S	M, C, R	P, H	B, Wo		
17. Shell Rock Wildlife Area NW edge of Shell Rock	51								S			W, B*, Wo		
18. South Fork Park 21045 Cedar Ave., 1 mi. W of Dumont	10								J, L4, S	C, E				W
19. Sportsman's Park 27588 180th St., Clarksville	36	N5		V		OF1 P			P*, L8	C, E				
20. West Fork Forest Access 28376 Temple Ave., New Hartford	204								S	C		B, Wo		W, F, U
21. Wolters Prairie Preserve 19155 Quail Ave. 3 mi. SW of Clarksville	44											P15		
22. Wunsch Memorial Park 201 S. Water St., Greene	4	E10, N5	D	F		OF1 P			S	M, C, R	P			
23. Lucky Seven Preserve Grand Ave., 6 mi. S of Bristow	41											W, B		
24. Hogenkamp Wildlife Area Hwy. 3, Clarksville	36											P, B, W		W, U
25. Eisentrager Wildlife Area 2 mi. South of Dumont	116											W, P, B		W, U



BUTLER COUNTY

Barn Quilts

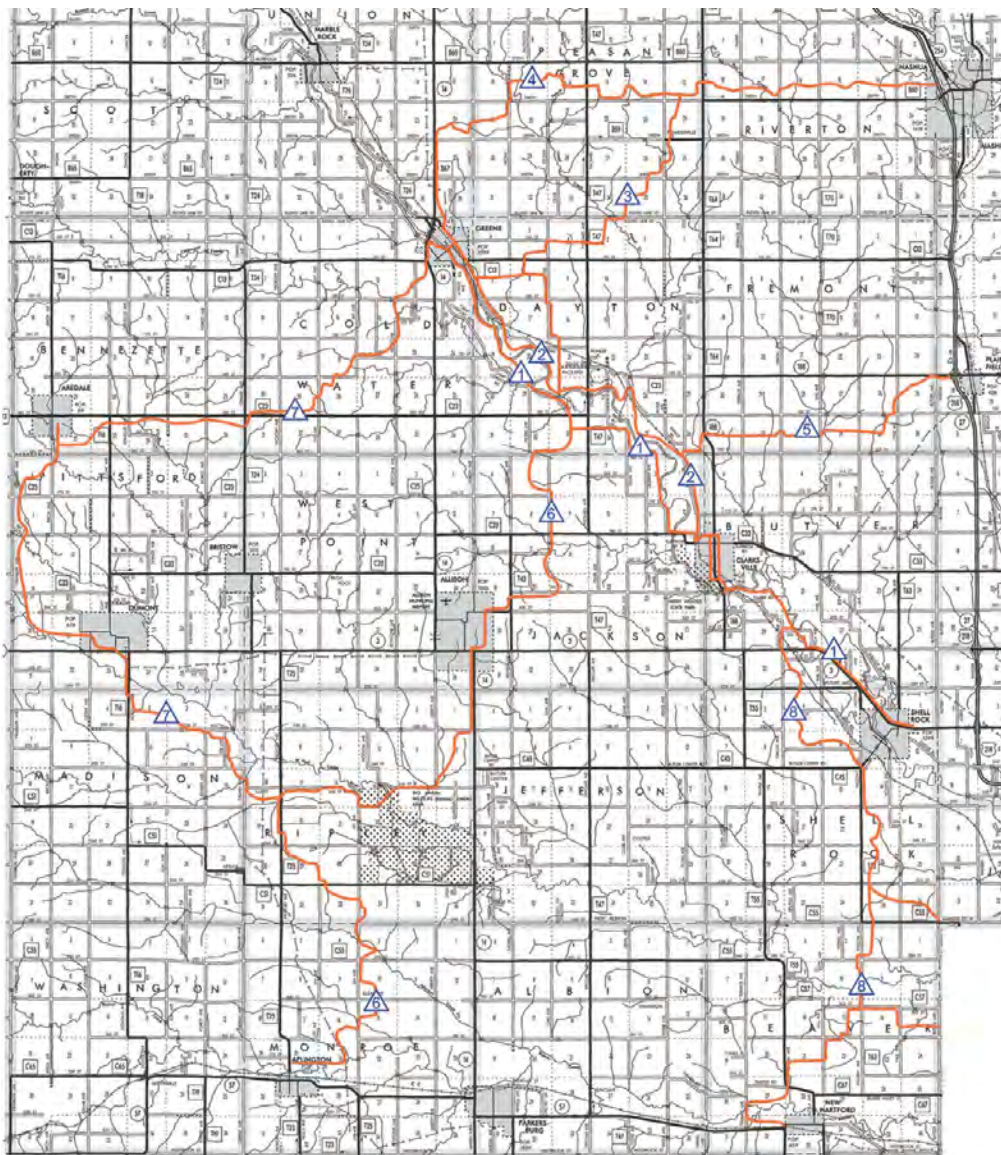


Map Number	Address of Barn	City	Owner Name	Quilt Pattern Name
1	33131 Highway 188	Clarksville	Nathan Chester	"Saw Tooth Star & Nine Patch in Middle"
2	27382 110th St (C13)	Greene	Andrew and Marcella Nixt	"LeMoyne Star"
3	16991 Hwy 188	Clarksville	Mary Freese	"Rail Fence"
4	29361 Superior Rd (C33)	Clarksville	Stauffer Family	"Basket of Lilies"
5	17957 Upland Ave	Clarksville	Brandon and Catherine Kramer	"Bear Paw"
6	208 North Main St. (downtown)	Clarksville	Clarksville Lumber	"Fox and Geese"
7	19782 Hwy 188	Clarksville	Paul and Lucille Leerhoff	"Ohio Star"
8	26482 Highway 3	Clarksville	Di and Randy Miller	"Five Point Star"
9	1100 South Mather St.	Clarksville	City Park Shelter	"Water Wheel"
10	22352 Highway 3	Allison	Ken and Illa Wangsness	"Starlight Variation"
11	23685 Sinclair Ave (T47)	Allison	Edward Johnson	"Flying Squares"
12	24904 Butler Center Rd (C45)	Allison	Darin Stokes	"Corn and Beans"
13	27924 Butler Center Rd (C45)	Clarksville	Monica Lursen	"Cyclone"
14	29556 270th St	Shell Rock	Dave Albrecht	"Goose in the Pond"
15	32461 280th St	Shell Rock	Fred and Judith Strotman	"Schoolhouse"
16	32092 250th St	Shell Rock	Elso Reints	"Optical Illusion"
17	32696 Hwy 57	Aplington	Carolyn Hartema	"Sunflowers"
18	15406 150th St	Bristow	Jeanette and Bruce Miller	"Eight Pointed Star"
19	14346 Grand Ave (T24)	Bristow	Ed and Luella Miller	"Iowa Star"
20	519 East Butler St. (in city - North side)	Greene	Chad and Lisa Austin	"Variation of a Basket"
21	31121 Highway 3	Shell Rock	Norm and Jan Mulder	"Flying Dutchmen"
22	17535 Hwy 188	Clarksville	Ron and Betty Miller	"Gold Rush"
23	101 South Main St. (fairgrounds)	Allison	Butler County 4-H	"County Fair"
24	1006 7th Street (in city - west side)	Allison	Allison Farmer's Feed & Grain	"Harvest Star"
25	33714 280th St (C55)	Shell Rock	Dorothy Schwab	"Green Boutonniere"
26	23813 Birch Ave	Dumont	Ray & Betty Wickham	"Ohio Star 4x4"
27	24616 160th St	Greene	Wesley Ruby	"Stars & Diamonds"
28	32063 302nd St	New Hartford	Liz Rittgers	"Eight Hands Around"
29	17021 Royal Ave	Clarksville	Carolyn Bohner	"Pot of Flowers"
30	18328 180th St	Bristow	Beryl & Shirley Wubbena	"Stained Glass"
31	16054 Marsh Ave	Allison	Gladys Wubbena	"Eight pointed star"
32	17302 Grand Ave (T24)	Bristow	Arlin & Greta Eberline	"Freedom"
33	30215 170th St	Clarksville	Francis & Carol Edeker	"Double Aster"
34	33785 Terrace Ave	New Hartford	Vopal Youngberg	"Old Glory Star"
35	21338 Sinclair Ave	Allison	Eric & Vikki Bixby	"Martha Washington Star"
36	17813 120th St	Greene	Richard & Mary Ann Vickers	"Variation on Ohio Star"
37	18262 110th St	Greene	Graydon & Bernita Anderson	"Star Variation"
38	15657 Union Ave	Clarksville	Tom & Paula Barnett	"American Flag Variation"
39	29673 175th St.	Clarksville	Lynn & Rocky Norton	"Delectable Mountain"
40	16975 Packard Ave	Clarksville	Lucas & Alesha Wedeking	"8 Point Star Variation"
41	19456 120th St.	Greene	Doug Marsh	"Memories Never Fade"
42	12784 Ivy Ave.	Greene	Joseph & Kristin Becker	"Star of David"
43	11953 Kipling Ave.	Greene	Nathan Siemons	"Carpenter's Wheel"
44	21121 Sinclair Ave.	Allison	Dan & Amy Homeister	"Kentucky Chain"
45	22327 Butler Ave.	Shell Rock	Dave & Marion Epley	"Whirlwind"
46	17542 Jay Ave.	Bristow	Ken & Margaret Debower	"LeMoyne Star"
47	28632 Butler Center Rd (C45)	Shell Rock	Patrick & Kim Lursen	"Go State"
48	23592 160th St.	Greene	Barb Wagner	"Center Stage"
49	25898 310th St.	Parkersburg	Kevin & Jill Toben	"Sister's Choice"
50	29727 220th St.	Shell Rock	Jack & Mari Kramer	"Daisy Basket"
51	22494 Yale Ave.	Shell Rock	Epley Bros. Hybrids, Inc.	Company Logo
52	33616 Martin Ave.	Parkersburg	Stan & Vickye Thompson	"A Missouri Star"
53	18239 Dodge Ave.	Dumont	Dwight & Leslie Haverkamp	"IH Farmall Custom Design"
54	31719 250th Street	Shell Rock	Burdette & Ellyn Johnson	"Ohio Star with a brand 'Rafter J'"



BUTLER COUNTY *Snow Snoops*

SNOWMOBILE TRAIL MAP



The Butler County Snow Snoops offer well groomed snow covered trails, fun, family oriented activities, and much more. Club rides are held locally as well as out of state, and meetings are held the first Wednesday of each month at area businesses. There are even canoe floats in the summer!

Interested riders do not have to live in Butler County to be a member. In fact, this club has members from several counties and many of them belong to more than one club in the area. Membership is \$25/single and \$30/family per year. This includes membership to the Iowa State Snowmobile Association.

If you are a snowmobile enthusiast, belonging to a snowmobile club is important. It's these clubs that line up, clear, mark and groom the trails for everyone to enjoy. Membership is key to keep funding coming in to the clubs to pay for grooming costs. If you would like to become a member of the Butler County Snow Snoops you can email: snowsnoops@butler-bremer.com.





Lincoln
SAVINGS BANK

MORE THAN A BANK

*We are rooted in history
with an eye on the future.*

Scan Me



(800) 588-7551



Member
FDIC



WILDER PARK

"Our Secret Is Out...North Central Iowa's Most Unique Recreation Area"



**Full Season Campsites Available!!!
Dog Park!**

**Open year round
Overnight Stays - Special Events**

For rental availability, call Allison City
Hall 319-267-2245 or email
callison@netins.net for
more information.

Visit us online at www.visitwilderpark.com
for our exciting 2023 summer lineup!

Amenities include: Camp Host, Lodge, Rental Cabin, 84 spacious campsites with 26 full hook-ups, Two Fishing Ponds, Three Shelter Houses, 18 hole Disc Golf, Miniature Golf, Foot Golf, Walking/Biking Trails, Dog Park, 1.3 mile Intra-Park Trail, Trail Head to 21 mile Bike Trail, 2 Playgrounds, Sand Volleyball, Pickle Ball, Shower House, Severe Weather Shelter for 150 persons, Wild Flower Prairie...All in a Tranquil Setting!

