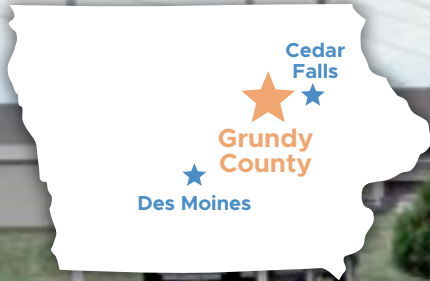


**FREE  
PUBLICATION**



# Grundy County

## 2021 Visitors Guide



**Barn Quilts ..... 5-7**  
**Campgrounds..... 26-27**

**KLMJ & KQCR**  
**RADIO On The Go**

Look for our app at [RadioontheGo.com](http://RadioontheGo.com)

We have you covered when you are on the go!

Follow Us on:



[radio@radioonthego.com](mailto:radio@radioonthego.com)  
(641) 456-5656 *Hampton*  
(319) 346-1234 *Parkersburg*



**104.9 KLMJ-FM**  
Hampton  
**98.9 KQCR-FM**  
Parkersburg



# ALL-AMERICAN FAIR JULY 13-17, 2021

## Wednesday, 7/14

4:30pm Farm Bureau Virtual Ag Trailer  
6- 8:00pm Sweet Corn Feed  
7:00pm Farm Bureau Family Fun Night  
7:00pm King & Queen Announcement  
9:00pm DEKALB Movie Under the Stars

## Thursday, 7/15

7:30am Crop Marketing Program  
1:00pm Storytime w/Kling Memorial Library  
2- 4:00pm Magician/Balloon Animals  
2- 7:00pm Laser Tag  
7:00pm Tuff Truck Races, entertainment TBA  
9-12pm Teen Dance

## Friday, 7/16

9:00am- 4pm IA Corn Growers Inflatables  
7:00pm Old School Figure 8 Races  
9:00pm Dance w/Side Show Bob

## Saturday, 7/17

10:00am Prairieland Pullers Garden Tractor Pull  
1:00pm Scotty's Saloon Small Town Throw Down Bags Tourney  
1:00pm Farm Bureau BBQ Cook-off Contest  
1:00pm Hurling Hatchets sponsored by Scotty's Saloon  
2-3pm Monster Arm Wrestling Weigh-In  
7:00pm Demo Derby/Trailer Races  
Fireworks After Dark  
9:00pm Dance with Madd Hoss Jackson



Side Show Bob Band



Madd Hoss Jackson



*Additional  
Grundy County Speedway  
Events:*

Grandstand Fundraiser June 12  
Figure 8 Races, June 19  
Figure 8 Races, August 28  
Snowmobile Grass Drags, TBA

[www.GrundyCountyFair.com](http://www.GrundyCountyFair.com)



The Grundy County Visitor Guide was produced by The Grundy Register, a division of Mid-America Publishing, in association with the Butler-Grundy Development Alliance.

**Publisher**

Rob Maharry

**Editor**

Rob Maharry

**Designer**

Zoë Larson

**Advertising sales**

Rhonda James

**Editorial content**

**and photos**

Rob Maharry

Jeff Kolb

Kevin Williams

Diane Paige

Heidi Biersner

Cherie Souhrada

Jill Brown



# Welcome to Grundy County!

This past year has been like nothing any of us have ever experienced. As vaccines continue to roll out, we are hopeful that events and festivals will take place as planned, and that this year will be a time to experience all that was missed in 2020. We look forward to welcoming you as you reconnect with family and friends, or simply want to explore some new destinations to get your family out of the house in 2021. This past year has been very challenging for our small businesses, especially the food and beverage establishments and small retailers. I would encourage you to make a conscious effort to support these businesses this year like you never have in the past. We are all in this together to make sure these family owned businesses are here for years to come.

If there was anything positive that came out of this past year, it was the realization that Grundy County and our region is blessed with an abundance of outdoor recreation! Interest in the barn quilt tour

also increased dramatically in 2020 as it provided a safe opportunity to get out of the house by taking the self-guided driving tour.

For those coming to visit friends and family, I invite you to reacquaint yourself with your favorites, and also explore some of our new destinations and shops. After your visit is complete, I encourage you to return, and consider making Grundy County your home. After what we all experienced this past year, the simple things, like care and concern for our neighbors, open outdoor spaces, and the general safer feeling found in our small communities is more important than ever. The ability to work remotely, a lower cost of living, or the vast job openings in a wide range of careers here in the Cedar Valley has made our region one of the most attractive and safe places to live, work, and raise a family! Several communities here in Grundy County have new housing opportunities that are currently under development, so now

is the perfect time to consider relocating to our county!

I encourage you to follow our social media handle @livethevalley on Facebook, Instagram, Twitter, and LinkedIn to see for yourself how we “Live the Valley” in Grundy County, and the entire Cedar Valley Region of Iowa. Be sure you share your experiences too! Check out [www.livethevalley.com](http://www.livethevalley.com) to see all that our region has to offer, plus you can use our handy “cost of living comparison tool” to see how much money you can keep in your wallet here in the Cedar Valley, compared to other cities in the United States!

We are only a phone call or email away to help with planning your visit, or for relocation assistance. Feel free to contact our office at (319) 267-2858 or send an email to [butlergrundy@netins.net](mailto:butlergrundy@netins.net).

*Jeff Kolb*

*Executive Director*

*Butler-Grundy*

*Development Alliance*

**Bottles two Backpacks**  
Learning Center  
319-825-8888

CACFP QRS level 4 DHS Accepted  
**Valerie L. Rhoads - Center Director**  
204 G Ave • Grundy Center, IA 50638

The advertisement features a cartoon blue backpack character with a face, arms, and legs, holding a pink pencil. The background is green with a white banner at the top.

**Grundy County REC**  
A Touchstone Energy Cooperative  
Our mission is to provide our members safe, reliable, electric service

**303 North Park Avenue,  
Grundy Center**  
**319-824-5251 or 1-800-390-7605**  
**Hours: Mon.-Fri. 8 a.m.-4:30 p.m.**

The advertisement has a green background with white and yellow decorative swirls. It features the Grundy County REC logo and contact information.

# TABLE OF Contents

## EXPLORE

- Barn Quilts..... 5-7
- Calendar of Events .....8
- Festivals & Events .....9
- Grundy County Fair ..10-11

## VISIT

- Beaman..... 12
- Conrad ..... 13
- Dike ..... 14-16
- Grundy Center..... 17-19
- Holland ..... 20
- Morrison..... 21
- Reinbeck.....22
- Stout .....23
- Wellsburg .....24

## ENJOY

- Let's Go Camping.... 26-27
- County Parks..... 28-29
- Area Recreation .....30-31
- Golf Courses .....32
- Libraries .....33



Vintage Market

# Shop local in Grundy County

Grundy County is home to a diverse selection of shopping options, covering everything from clothing and apparel to do it yourself crafting and home décor. Spend a day here shopping, and find out what all the fuss is about!

Downtown Grundy Center is the county's largest shopping area, covering several blocks with locally owned businesses and boasting a host

of dining options once you're ready for a break. Grundy Center is a Main Street Iowa community and also features a business park on the west edge of town.

Conrad's downtown received a façade update in 2013 and 2014 as part of a Main Street Iowa Community Development Block Grant (CDBG) and includes a crafting and sewing shop, a



Grundy Center Girls Night Out

flower shop and more new businesses to come in 2021.

Reinbeck, Dike and Wellsburg all boast strong Main Street areas with opportunities to grow in the future, and the pages that follow present more detailed descriptions of each town's shopping options. Come and see it for yourself!



# Take a Tour

## THE GRUNDY COUNTY BARN QUILTS

The Barn Quilts of Grundy County is a unique form of public art that draws visitors from all over the state - and beyond - into the heart of Grundy County.

Designed to highlight the rural, agricultural heritage of Grundy County, as well as the important folk art of quilting, the Barn Quilt Loop features large patchwork quilt blocks that have been painted onto the sides of barns and other

farm buildings in the area.

As you travel along the 64-mile Barn Quilt Loop, you will be delighted by dozens of colorful quilt patterns that are spread across the rural areas and in the towns of Wellsburg, Conrad, Beaman, Grundy Center, Morrison, Reinbeck and Dike.

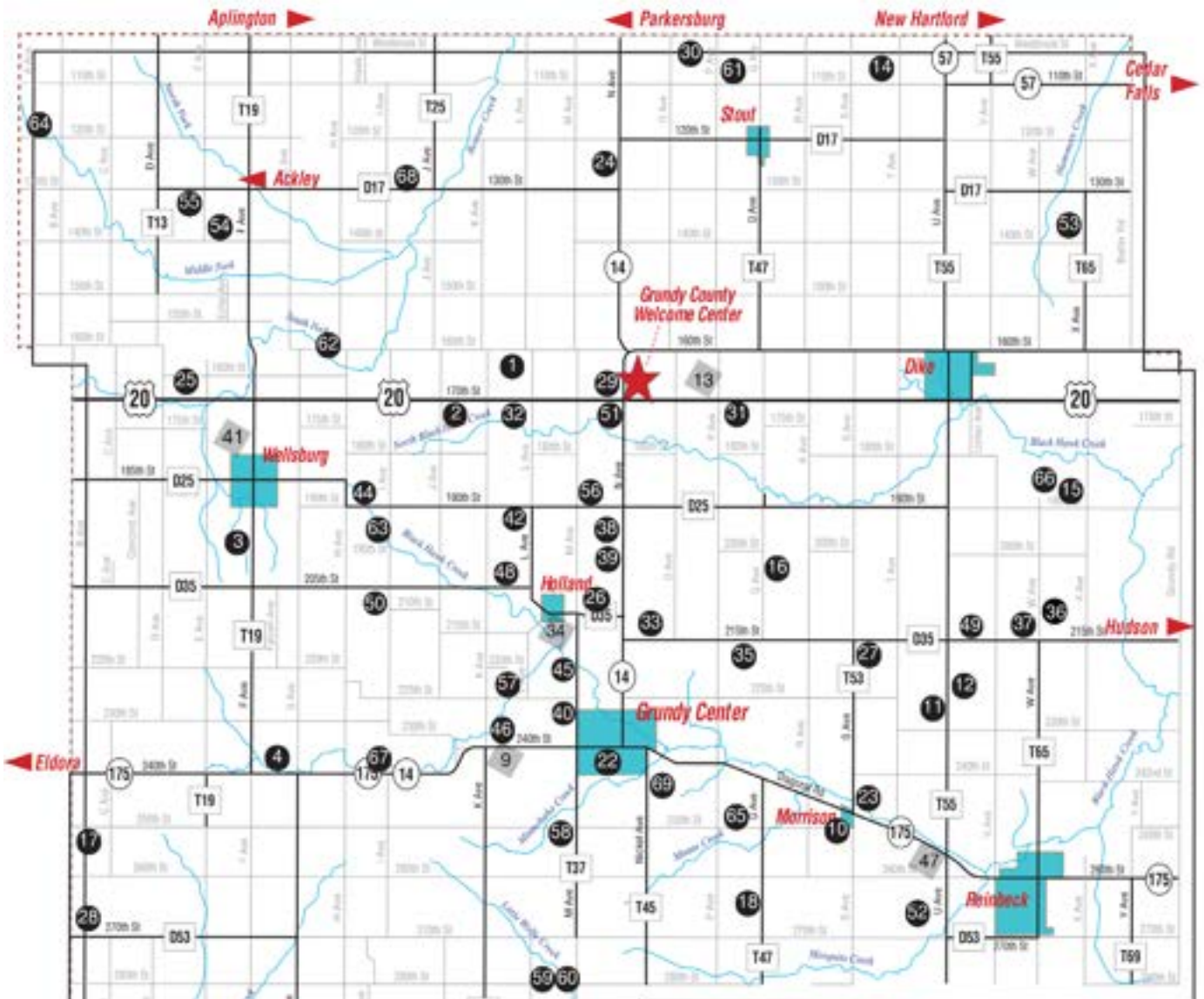
Over the past few years, the Barn Quilts of Grun-



dy County have grown into a unique attraction that has drawn visitors from all over the country to see the quilt blocks, shop in the county's many specialty and gift shops, enjoy a meal at one of several locally-owned restaurants, and just generally have a pleasant time here in Grundy County, home of the Original Iowa Barn Quilts.



# BARN QUILT Locations



- denotes existing quilt location
- denotes "phantom" quilt location

## Grundy County, Iowa

### Phantom Barn Quilts:

Phantom barn quilts, which stood at one time, are no longer in existence. Their former locations are denoted on this map. Quilts being restored are noted on the barn quilt location page.



For more information, go to [www.grundycountyia.com](http://www.grundycountyia.com)!

1. Weathervane	20428 160th St.	Holland	39. Contrary Wife	19605 N Ave.	Holland
2. Log Cabin	19191 170th St.	Holland	40. Hovering Hawks	22583 M Ave.	Grundy Ctr.
3. North Star	19813 F Ave.	Wellsburg	41. Churn Dash	17949 F Ave.	Wellsburg ♦
4. Eight-Pointed Star	23925 G Ave.	Grundy Ctr.	42. Independence Day	11919 L Ave.	Holland
5. Windmill	31704 G Ave.	Conrad	43. Mill Wheel	20031 290th St.	Beaman
6. Hole in the Barn Door	32191 G Ave.	Conrad	44. Rolling Pin	17309 190th St.	Wellsburg
7. Schoolhouse	32889 H Ave.	Conrad	45. Shoemakers Puzzle	22033 M Ave.	Grundy Ctr.
8. County Fair	29131 K Ave.	Beaman	46. Garden Gazebo	23308 K Ave.	Grundy Ctr.
9. Corn & Beans	20254 240th St.	Grundy Ctr. ♦	47. Mosaic Patch	29514 Diagonal Rd.	Reinbeck ♦
10. Bear Paw	204 4th St.	Morrison	48. Jack in the Pulpit	20601 205th St.	Holland
11. LeMoyne Star	22367 U Ave.	Reinbeck	49. Firewheel	30309 215th St.	Reinbeck
12. Twisted Log Cabin	22128 U Ave.	Reinbeck	50. Morning	17752 205th St.	Grundy Ctr.
13. State Fair	16421 P Ave.	Dike ♦	51. Whirlwind	22803 170th St.	Holland
14. Next Door Neighbor	10653 T Ave.	New Hartford	52. Turkey Tracks	26593 U Ave.	Reinbeck
15. Gentleman's Fancy	32605 190th St.	Hudson	53. Prairie Queen	13725 X Ave.	Cedar Falls
16. Maple Leaf	20420 Q Ave.	Grundy Ctr.	54. Prairie Flower	14623 140th St.	Wellsburg
17. Snail's Trail	11712 250th St.	Eldora	55. Fox & Geese	13982 130th St.	Wellsburg
18. Dutchman's Puzzle	25601 Q Ave.	Grundy Ctr. ♦	56. Kentucky Chain	22245 190th St.	Holland
19. Variable Star	12719 330th St.	Conrad ♦	57. Farmer's Daughter	20163 225th St.	Grundy Ctr.
20. Card Trick	13811 330th St.	Conrad	58. County Fair Variation	25035 M Ave.	Grundy Ctr.
21. Arrowheads	Beckman St.	Beaman ♦	59. Rail Fence	21563 280th St.	Grundy Ctr.
22. Goose Tracks	1206 L Ave.	Grundy Ctr.	60. Bed of Stars	21563 280th St.	Grundy Ctr.
23. Bachelors Puzzle	24345 S Ave.	Reinbeck	61. Grandmother's Choice	25609 110th St.	Parkersburg
24. Friendship Star	12395 N Ave.	Parkersburg	62. The Barn	16672 160th St.	Wellsburg
25. Crossed Canoes	13209 165th St.	Wellsburg	63. End of the Day	19789 I Ave.	Wellsburg
26. Old Maid's Puzzle	20956 M Ave.	Holland	64. Destination	10813 120th St.	Ackley
27. Grandmother's Fan	21548 S Ave.	Reinbeck ♦	65. Black Spruce	25577 250th St.	Grundy Ctr.
28. Birds Nest	11921 270th St.	Conrad	66. Grandmother's Cross	18848 W Ave.	Reinbeck
29. Hens & Chicks	16319 N Ave.	Holland	67. Christmas Tree	17467 240th St.	Grundy Ctr.
30. Northwind	10433 P Ave.	Parkersburg	68. Streak of Lightning	18665 130th St.	Aplington
31. Iowa Star	25186 170th St.	Dike	69. Eight Point Star	25228 Nickel Ave.	Grundy Ctr.
32. Cat's Cradle	19704 170th St.	Holland			
33. Courthouse Steps	23485 215th St.	Grundy Ctr.			
34. Sawtooth Star	101 Market St.	Holland ♦	♦ - Phantom		
35. Country Roads	25058 215th St.	Grundy Ctr.	♦ - Being restored		
36. Goose on the Pond	20744 W Ave.	Reinbeck			
37. Flying Geese	31685 215th St.	Reinbeck			
38. Contrary Husband	19605 N Ave.	Holland			



📍 703 F Avenue, Suite 1,  
Grundy Center, IA 50638  
☎ (319) 824-6979

ISU Extension office hours are  
Monday - Friday 8 a.m. - 4:30 p.m.

# 2021 Calendar of Events

- April 16-17 ..... City-Wide Garage Sales ..... Wellsburg..... (641) 869-3721
- April 24 ..... ABC City-Wide Garage Sales..... Conrad ..... (641) 366-2108
- May 1 ..... City-Wide Garage Sales ..... Dike ..... (319) 989-2291
- May 29-31 ..... Memorial Weekend Festival ..... Beaman ..... (641) 366-2894
- June 11-12 ..... Black Dirt Days ..... Conrad ..... (641) 366-2165
- June 12-15 ..... Wellsburg Daze ..... Wellsburg..... (641) 869-3721
- June 17 ..... Rock Around The Clock Tower Cruise .....  
..... Grundy Center.... (319) 825-6742
- June 25-26 ..... City-Wide Garage Sales ..... Grundy Center.... (319) 825-3565
- July 3-4 ..... 4th of July Celebration ..... Reinbeck ..... (319) 788-6404
- July 8-11 ..... Felix Grundy Festival ..... Grundy Center.... (319) 825-6742
- July 13-17 ..... Grundy County Fair ..... Grundy Center.... (319) 243-8981
- TBD..... Watermelon Day ..... Dike ..... (319) 989-2291
- Aug. 19 ..... Rock Around The Clock Tower Cruise .....  
..... Grundy Center.... (319) 825-6742
- Sept. 9-11..... Fall Open Houses ..... Grundy Center.... (319) 825-6742
- Sept. 12 ..... Pioneer Craft Fair ..... Morrison..... (319) 345-2688
- Sept. 18 ..... Reinbeck Art Festival ..... Reinbeck ..... (319) 788-6404
- Oct. 14 ..... Girls' Getaway ..... Grundy Center.... (319) 825-6742
- Oct. 28 ..... Pumpkin Fest ..... Conrad ..... (641) 366-2108
- Nov. 4-6..... Holiday Open Houses ..... Grundy Center.... (319) 825-6742
- Nov. 12..... Miracle on Main..... Reinbeck ..... (319) 788-6404
- Nov. 26-27 ..... Main Street Mingle..... Grundy Center.... (319) 825-6742
- Nov. 27 ..... Small Business Saturday ..... Shop Your Local Community
- Dec. 3-4..... Christmas Tree Lane & Open HousesWellsburg .... (641) 869-5031
- Dec. 4..... Christmas in Conrad..... Conrad ..... (641) 366-2108





# Festivals and Events

Grundy County residents love to get out and celebrate, and there's no better place to do that than at local festivals and events. No fewer than six communities in Grundy County host summer celebrations where residents young and old gather to renew old friendships and make new ones.

Beaman's Memorial Day Celebration kicks off festival season in late May and is followed by festivals in Conrad and Wellsburg in June, Stout



Dike Watermelon Day

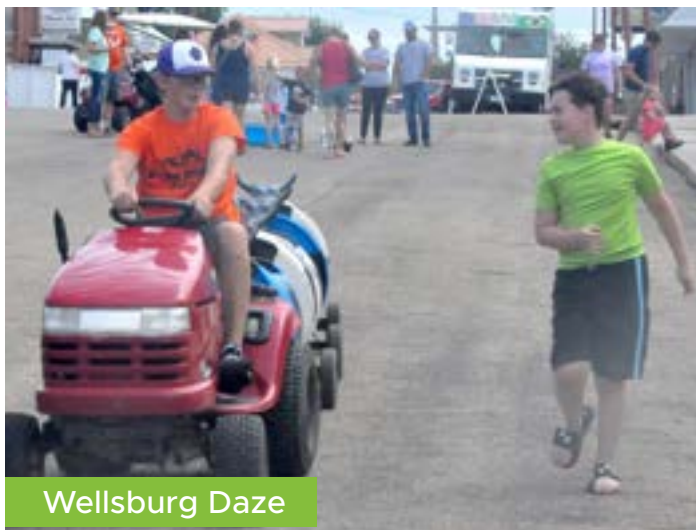
Freedom Fest, Reinbeck, and Grundy Center, in July and Dike in early August.

Each annual festival features a large parade while many are built around former residents returning for class reunions. Most also feature musical entertainment from local and regional artists. Festivals in Conrad, Dike and Reinbeck are also capped

by fireworks displays.

In addition, the Grundy County Museum in Morrison hosts the Pioneer Craft Fair the second Sunday of September each year. This event features displays and demonstrations of life the way it was when Grundy County was founded in the 1850s.

Holiday celebrations are also held each year between Thanksgiving and Christmas in Conrad, Dike, Grundy Center and Reinbeck.



Wellsburg Daze



Beaman Memorial Day Festival



# EXPERIENCE THE Grundy County Fair

Grundy County is proud to be one of both the State of Iowa and the nation's top agricultural counties. One of the ways it celebrates its agricultural heritage each year is the Grundy County Fair. The Fair features programs for both Grundy County 4-H and FFA youth,

as well as events and activities that the entire family can enjoy. The 2021 fair is scheduled for July 13 to 17 at the Fairgrounds in the southeast corner of Grundy Center. Major grandstand events include coronation of the Queen and King, Family Fun Night, and

a fireworks show. Throughout the remainder of the week, there will be events such as the old school Figure 8 races, rodeo, demo derby, trailer race, mud volleyball, bean bag tournament, BBQ cook off, and more. Musical entertainment will also be on hand, with a num-

ber of acts including Side Show Bob on Friday night and area country sensation Madd Hoss Jackson on Saturday night. Madd Hoss Jackson will take the stage after the Demo Derby and trailer races. Complete fair information can be found at [www.grundycountyfair.com/](http://www.grundycountyfair.com/)

## Feed your mind, body & soul




- Breakfast & Lunch
- Specialty Coffee & Tea
- Smoothies
- Acai Bowls
- Unique Gifts
- Holistic Health Products



[www.thenaturalgrind.com](http://www.thenaturalgrind.com)  
Natalie Kracht, Proprietor  
319-825-5544 • 721 G Ave., Grundy Center, IA




### Award Winning Tenderloin

- Grundy's historical dining atmosphere ...

Features in Our Iowa Magazine

- Unique menu
- Gluten free options
- Daily homemade specials
- Pub with full bar
- Outside seating



Find our menu    

Locally owned and operated



725 G Avenue, Grundy Center, IA  
319-825-4950  
Monday-Saturday 11 a.m.-Close  
Jill Krausman, owner  
[thelandmarkbistro@gmail.com](mailto:thelandmarkbistro@gmail.com)



# WELCOME HOME TO GRUNDY COUNTY!

## Welcome to your hometown newspapers!



As you look for the happenings & activities in and around Grundy, Hardin and Butler Counties, look no further than our publications. We are proud to keep your communities connected.

**Serving you with more than 85 years of professional newspaper experience!**

- ★ Local Coverage, Feature Stories and Great Sports
  - ★ Special Supplements & Tabloids
- ★ Keeping Your Local Hometown Communities Connected
  - ★ Newspaper & Online Advertising
  - ★ Custom Printing ★ Marketing Solutions
  - ★ READ! ENJOY! Subscribe Today!

*Teaming up to bring you the BEST in local news, special features, great sports and an array of printing and advertising products.*

Rob Maharry ★ Rhonda James ★ Ana Olsthoorn ★ Amy Cleveland  
Diane Paige ★ Jake Ryder ★ Zoë Larson ★ Emily Griffioen

Award Winning Newspapers  
In Print ★ Online

<sup>Eldora</sup> Herald-Ledger <sup>The Grundy Register</sup> <sup>Butler County</sup> Eclipse NEWS-REVIEW <sup>Clarksville</sup> Tribune-Journal Star

# Beaman

Beaman is a small but mighty community of 183 residents located about 12 miles southwest of Grundy Center, two miles east of Conrad and 16 miles northeast of Marshalltown in southern Grundy County at the intersection of county roads T-29 and D-67. It is known for its popular slogan: "You're not dreamin', you're in Beaman!"

**What to do:** The Comet/Wolf Creek trail, which starts



Beaman Cannon

in Conrad and runs all the way past Wolf Creek County Park into Gladbrook, cuts through the heart of Beaman. The

aforementioned county park is located about three miles east of town on 330th Street, a gravel road, and features camping (with a shelter house, electricity and water), bridges and hiking opportunities in a quiet area full of natural beauty.

Beaman hosts its town festi-

**Population:** 183

**Motto:**  
You're not dreamin',  
you're in Beaman.

**City website:**  
cityofbeaman.com

**City Hall:**  
(641) 366-2894

val on Memorial Day weekend and is also home to a public library on Main Street.



## Antiques • Gifts • Art • Collectibles



**Open**

April - Dec.: Wednesday - Saturday • 10-5  
Winter Hours: By Appointment or by Chance

- Art Glass
- Pottery
- Stoneware
- EAPG
- Furniture
- Local Memorabilia
- Local Photography
- Other Unique Items

**33311 Center St. • Beaman, IA • (641)366-3370**

Across from Post Office • [www.WolfCreekAntiques.net](http://www.WolfCreekAntiques.net)



# Conrad

Famous for its black dirt soil and fertile surrounding farmland, Conrad is a vibrant and progressive town of just over 1,100 residents situated in the panhandle of Grundy County about 15 miles southwest of Grundy Center, 13 miles north of Marshalltown and 20 miles southeast of Eldora just off of Highway 14.

Conrad has been a Main Street Iowa community since 1993, and the downtown area underwent a façade renovation and revitalization project in 2013 and 2014. The city has made major progress on constructing a 50-lot housing development on the north side of town, and as of spring 2021, the first home is nearly completed. Several new businesses have moved into the downtown area in the last few years, and buildings are still available for aspiring entrepreneurs looking



Freedom Rock

to set up shop in a strong small town with a bold vision for the future.”

**What to do:** Downtown Conrad offers a variety of shopping options and a state of the art public library built just over a decade ago. The Grundy County Freedom Rock was completed in 2016 at Gier Park across the street from the old

fire station near the intersection of Main Street and Grundy Avenue, and the Comet/Wolf Creek Trail begins here before continuing east toward Beaman.

Conrad hosts Black Dirt Days each June with a host of live entertainment, inflatable fun and food stands for all ages. The Conrad Heritage Hall and

Museum, located inside of city hall, is a shrine to the history of the community and contains a host of local artifacts.

**Population:** 1,077

**City website:**  
[Conrad.govoffice.com](http://Conrad.govoffice.com)

**City Hall:**  
 (641) 366-2300



Black Dirt Days



Black Dirt Days



# Dike

With its prime location along Highway 20 just 11 miles west of Cedar Falls and the construction boom at the Fox Ridge Golf Course development, Dike is Grundy County's fastest growing city, with nearly 1,300 residents according to the most recent population estimate. Dike, however, is so much more than a bedroom community.

*Continued on pg. 14*



Christmas in Dike

# SLICE

ULTRA SHED-SPORT'S BAR & GRILL

Monday 3:30 - 9pm  
Pizza Only

Tuesday - Saturday  
3:30 - Closing

319-346-8025  
115 W Elder Street, Dike, IA



**DINNERS, SANDWICHES  
PIZZA, BEVERAGES  
BEER, WINE  
MIXED DRINKS**





Dike Watermelon Day



Dike Aquatic Center

*Continued from pg. 13*  
**What to do:** The man-made Grundy County Lake on the south edge of town offers some of the best recreational opportunities around,

with fishing, camping, boating and a trail for runners, walkers and cyclists. Check out the shops downtown, or if you're more into education, Mark Heimann

recently opened a one-of-a-kind chainsaw museum. Every August, Dike holds its town festival, Watermelon Day.

**Population:** 1,280  
**Motto:**  
 A slice of Iowa  
**City website:**  
[dikeia.com](http://dikeia.com)  
**City Hall:**  
 (319) 989-2291



PEOPLES SAVINGS BANK

WELLSBURG | CLEVES | DIKE




# Home of the AGWSR & DNH Pride Debit Cards

**Cleves**  
 33149 159th St, Ackley  
 (641) 847-3126

**Wellsburg**  
 414 N Adams  
 (641) 869-3721

**Dike**  
 233 W Dike Rd  
 (319) 989-9062

VISIT US ONLINE [WWW.BANKPSB.COM](http://WWW.BANKPSB.COM)

MEMBER FDIC



New Dike Fire Station




CHECK OUT OUR COMPLETE LINE OF HARDWARE AND BUILDING MATERIALS

**FREE ESTIMATES**

**319-989-2222**

[ubbenbuildingsupplies@mschsi.com](mailto:ubbenbuildingsupplies@mschsi.com)

**DIKE, IOWA**




**PO Box 40 • Dike, IA • 319.989.2700**

**CITY OF DIKE IOWA**

**A SLICE OF IOWA**

..... Mayor Mike Soppe .....



540 Main Street  
319.989.2291

Office hours:  
Monday-Friday  
9:00am - 12:00pm  
1:00pm - 4:30pm

See website for more information on community events

**dikeia.com**

**DIKE NEW HARTFORD COMMUNITY SCHOOL**



**330 Main Street**  
**Dike, Iowa**  
**319-989-2552**





# Grundy Center

As its name indicates, Grundy Center sits right in the middle of Grundy County, and it's the most populated city as well as the county seat. With just over 2,700 residents and a host of offerings including outdoor activities, live music, delicious eateries and boutique shopping, the community truly has some-

thing for everyone.

Spend an afternoon walking around the vibrant downtown district and check out some of the historic architecture as you peruse the local shops, take a break with a coffee or a bite to eat at one of several dining establishments, or catch a movie or do some bowling at night.

The Grundy County courthouse, which is one of two Grundy County structures featured on the National Registry of Historic Places, dates back to the Romanesque Revival-era and recently celebrated its 125th anniversary. It features a gazebo that is used for concerts and other entertainment during the

spring and summer months.

**What to do:** Grundy Center hosts a monthly farmer's market and "Rock Around the Clocktower" concert series during the summer months and is home to both Felix Grundy Days and the Grundy County Fair, which are both held in July.

*Continued on pg. 18*

## Make a Day of It... Grundy Center

Day Trip? Girls Day Out?

Looking for a one-of-a-kind find? A perfect mix of shopping and dining is right here!



GRUNDY CENTER  
CHAMBER-MAIN STREET



- March 18-20 Spring Open Houses
- April 3 Eggstravaganza
- May 8-9 Mother's Day Weekend Event
- June 17 Rock Around The Clock Tower
- July 8-10 Felix Grundy Festival
- August 19 Rock Around The Clock Tower

- September 9-11 Fall Open Houses
- October 14 Girl's Getaway
- November 4-6 Holiday Open Houses
- November 26-28 Main Street Mingle /Small Business Saturday



*Continued from pg. 17*

Grundy Center is proud of its history, and the recently renovated Herbert Quick Schoolhouse—dedicated to the late writer and Grundy County native—takes visitors on a tour of the building where he taught in the late 1800s. The Grundy Center Historical Society Museum at 610 7th Street is another great opportunity to learn more about the people and events that have shaped the town.



Like Conrad, Grundy Center is now a Main Street Iowa community, and a downtown façade renovation has brought a fresh new look to the historic area along G Avenue. In 2021, Grundy Center natives Matthew and Tara Bockes completed a renovation of the upper level of the former Frederick Furniture Building thanks to a state grant, creating four new apartments downtown. In addition, the Maroon and White Committee is currently leading

the process of applying for historic tax credits and renovating the former Upper Elementary building to create a “one-stop shop” for daycare and preschool in Grundy Center. Make plans to visit today!

**Population:** 2,670

**Motto:**  
The Good Life

**City website:**  
grundycenter.com

**City Hall:**  
(319) 825-6118



little  
**Prairie girl**  
*clothing. home decor. antiques*

612 G Ave, Grundy Center  
319-240-5060  
littleprairiegirl.com



Mon-Fri  
10 am-5 pm  
Saturday  
10 am-4 pm

Our website [www.heirloombloomsfarm.com](http://www.heirloombloomsfarm.com)  
**Red's Barn**, 23033 K Ave, Grundy Center, April-Dec.  
**Beans & Blooms**, 410 Main St, Reinbeck, Mon.-Sat.  
or by calling **319-269-7289**

Pick up available at locations and delivery available **FREE** in Grundy Center and Reinbeck. Nominal fee to surrounding towns, Cedar Falls, and Waterloo



Herbert Quick Schoolhouse

*the funky zebras*  
BOUTIQUE

607 G Ave, Grundy Center, IA 50638 | (319) 415-1747  
**HOURS: M-F 11 am-5 pm, Sat 10 am -3 pm**  
 grundycenter@thefunkyzebras.com  
 108 East Blackhawk Avenue, Prairie du Chien, WI 53821

LIKE US ON: 

[www.facebook.com/thefunkyzebrasgrundycenter](http://www.facebook.com/thefunkyzebrasgrundycenter)  
[www.facebook.com/Thefunkyzebrasprairieduchien](http://www.facebook.com/Thefunkyzebrasprairieduchien)

Red's Barn is a home and variety barn boutique space, featuring local vendors and one of a kind items. Open the 1st and 3rd weekends of the month.

**Red's Barn**

23033 K Ave, Grundy Center | 319-231-2995  
[www.redsbarn.com](http://www.redsbarn.com)  [RedsBarnGrundyCenter](https://www.facebook.com/RedsBarnGrundyCenter)

**Providing the best in  
 Product ~ Quality  
 Knowledge ~ Service**

**VanWall**  
 EQUIPMENT   
 JOHN DEERE

**Grundy Center**

# Holland

Though it may be small - with a population just under 300 - the town of Holland has outdoor entertainment in the Pioneer Trail and Holland Marsh to keep locals and visitors alike busy during the warmer months.

**Pioneer Trail:** Once an active railroad bed that served as a vital link to the largely agricultural communities of Holland, Grundy Center, and Morrison, the Pioneer Trail stretches for 12 miles to connect these towns. With a surface of crushed and compacted limestone, the trail is perfect for outdoor recreation activities including: hiking, running and biking during the warmer months, and cross country skiing during the colder months.

Horse back riding is allowed along a mowed grass trail that parallels the limestone trail, while motorized vehicles and



Pioneer Trail

hunting are prohibited on the trail.

Throughout the trail, there are eight conservation areas that are easily accessible to trail-goers. These include the Holland Marsh, Wolfe Family Preserve, Shearn Park, Grundy County Heritage Museum, Buckles Wildlife Area, Gutknecht Park, Copley-Strohbehn Preserve, and the Reinbeck section of the Grundy County Greenbelt.

**Holland Marsh:** The Holland Marsh itself is a great way to spend an afternoon explor-

ing nature. Spanning 46-acres, the wildlife area is open to small game and waterfowl hunting, and hunting of whitetail deer by bow is an option available by securing a permit from the local Conservation Board (319-345-2688). Largely a grassland, the area also contains several wetlands and small winter cover plantings.

Between the Pioneer Trail and Holland Marsh, you're sure to enjoy all of nature's treasures including wildlife and native vegetation in Holland.



**Population: 277**

**City Hall:**  
(319) 824-5131



# Morrison

Grundy County Heritage Museum

Although it's the smallest incorporated community in Grundy County, Morrison, located along Highway 175 halfway between Grundy Center and Reinbeck, is known as the home of the Grundy County Heritage Center and a famous area restaurant.

**Grundy County Heritage Center:** The Heritage Center is the hub of Grundy County history, and those



who love the past will find everything dating back to the time that Native Americans lived here to the present.

The center recently added a 1900s-era barn and house constructed inside of the walls, and its interpretive exhibit, "From Grassland to Granaries," shows the evolution of Grundy County from its native prairie habitat to the modern row crop farmland it's famous for today.

On the same property, the Peck Log Cabin, which was the home of Grundy County's first European settler William Peck, takes visitors back to 1853 with furnishing based on the area.

The Grundy County Heritage Center is open year round from 8:30 a.m. to 4:30 p.m. on Tuesday, Wednesday and Thursday or by appointment. For more information, call (319) 345-2688.

Every fall on the second Sunday in September, the Heritage Center hosts the Pioneer Craft Fair featuring free events and lessons on the ways of the early settlers who came to Grundy County. Favorites include beekeeping, honey, flint knapping, spinning and weaving, crocheting, timber framing, gold prospecting, butter churning and fireplace stew.

**Population: 91**

**City Hall:**  
(319) 345-2218

## Lilly is so grateful Roger gets to stay at home...



Caring for her husband alone at home was difficult, so they called Cedar Valley Hospice.

Roger now has:

- Access to expert care at home
- Support and education for Lilly
- The benefit of Hospice services (covered by Medicare, Medicaid and most private insurances)



800.626.2360 | [cvhospice.org](http://cvhospice.org)





As Grundy County's second-largest community, Reinbeck, located in the southeast corner of the county just 20 miles from the Waterloo/Cedar Falls area, is a hidden gem and the home of a growing downtown district with a variety of shops and restaurants, as well as a plethora of outdoor entertainment to keep visitors busy during any season. On top of that, you'll find a variety of public art around town, a quaint and walkable downtown area and beautiful city parks.



Elmwood Park in town offers fun for the whole family throughout the seasons, and it features a walking trail complete with 10-station exercise equipment. Strohhahn Park, located just north of town, is a favorite for both locals and visitors alike. Black Hawk Creek runs through the park, and it's one of the best nature watching spots in all of Grundy County.



The Reinbeck Greenbelt Area near Strohhahn Park is a 67-acre parcel of land with access to hunting (pheasants, rabbits and partridge), camping, fishing, archery, hiking, equestrian trails and snowmobiling.

Reinbeck hosts an annual art festival in September featuring local work, food trucks and live music, a fourth of July celebration

with a parade, car show, fireman's dance and other family-friendly activities, and the annual "Miracle on Main" in November.

**Population:** 1,626

**Motto:**

A place to grow

**City website:**  
reinbeck.org

**City Hall:**  
(319) 788-6404



**Assisted Living • Memory Care • Respite Care**

Arlington Place at Grundy Center is committed to providing our residents with quality living that maintains family values and services tailored to individual needs through a caring staff. Our unique program allows our residents to choose the services they want or need.

We provide: 24 hour restaurant style dining, house-keeping and laundry services, local transportation, daily life enrichment programs, individualized services, 24/7 trained staff, full-time registered nurse.

**95 D Avenue, Grundy Center, IA  
319-824-5674**

**arlingtonplaceretirement.com**

## Konken Electric, Inc.

**Since 1973**

**Farm, Residential, Commercial**



GRUNDY CENTER 319-824-3150

DIKE 319-989-2155

REINBECK 319-788-3150

# Stout

The tiny town of Stout, located between Dike, New Hartford and Parkersburg, is full of small town charm and caring neighbors. Though it may be small, the town celebrates in a big way with their annual Stout Freedom Fest in early July.

**Stout Freedom Fest:** During the beginning of July, locals celebrate the annual Stout Freedom Fest with a weekend full of fun for peo-



ple of all ages. To kick things off, the Church League's annual softball tournament takes place at the newly renovated Stout Astrodome. Each year, the public shows out to the ball diamond to watch the tournament, and enjoy food, beverages and the famous Stout Stuffer banana split from the concession stand.

For the youngsters, there are a number of activities in the park, including a slip and slide, the Bill Riley Talent Show and more. The festivities wrap up with a spectacular fireworks show after dark.

**Population:** 212

**City Hall:**  
(319) 346-2763

## THE MILL

### CONVENIENCE STORE

GREAT SOFT SERVE  
ICE CREAM BAR!

- Gift Store ~ Windmill Specialty Merchandise
- BP Fuel
- Coffee ~ Water
- Pop ~ Beer
- Snacks ~ Treats
- Mini Grocery Store
- Trucker Supplies

ENJOY DINING  
IN OR CARRY OUT

Hwy 14 & Hwy 20  
The Mill & Arby's  
319-824-2728

Godfathers Pizza  
319-824-3702

## Check Out Our WEEKLY SPECIALS

Great Pizza,  
Specialty Pizza,  
Breadsticks & Dessert

\$1 OFF  
Gas

bp

with  
\$20 Gas  
Purchase

Valid only at The Mill. With Coupons. Not valid with any other offers, discounts or coupons. Non-transferable. Expires 5/30/2022.

---

2 for \$5

Beef 'N Cheddar  
Classic

Hours ~ Mon-Thurs 6 a.m.-11 p.m., Fri-Sat 6 a.m.-12 a.m.  
Valid only at The Mill. With Coupons. Not valid with any other offers, discounts or coupons. Non-transferable. Expires 5/30/2022.

# Wellsburg

## Wellsburg Veterans Memorial

One of the proudest German communities in all of Iowa, Wellsburg is a town of just under 700 residents in northwest Grundy County just two miles south of Highway 20. The city traces its cultural lineage to the Ostfriesland region in the northwest corner of Germany along the coast of the North Sea.

Wellsburg is home to an impressive new veteran's memorial completed less than a decade ago, and the Chris Neessen House (now owned by B.E. Walters) at 601 East Fourth Street is listed on the National Registry of Historic Places. It



contains a museum full of antiques from various periods of history, and the Wells Hotel is another popular attraction.

Wellsburg Daze is a unique festival in that most of the events are held on Monday and Tuesday night in June of each year, and it includes a popular carnival and parade.

**Population:** 687

**Motto:**  
Proud of our Heritage

**City Hall:**  
(641) 869-3342



Wellsburg Daze

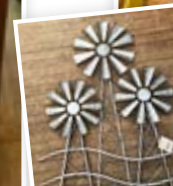
*Give yourself a gift!*  
Visit...

## Brick Bungalow

*Creations and gifts to warm your heart and home* **641-869-5031**

Tenzi, Itzi, Slapzi Games

Crazy Aaron's Thinking Putty



Metal Wall Décor



**f** 504 West 4th Street | Wellsburg | Iowa  
Fri & Sat: 11 a.m. - 2 p.m. | Thurs: 11 a.m. - 5 p.m.  
[brickbungalowwellsburg.com](http://brickbungalowwellsburg.com)



# Let's Go Camping

As of 2020, Grundy County will be home to three campgrounds with the addition of the new site at the fairground in Grundy Center. The popular Grundy County Lake site near Dike and the Wolf Creek County Park east of Beaman are still here and better than ever.

Whether you're looking for a short-term place to crash on your outdoor adventure or you're planning to stay for a while, Grundy County has a site for you. At the lake in Dike, you'll enjoy easy access to Highway 20, fishing, hiking, boating, the charms of downtown Dike just down the road and the close proximity to the Waterloo-Cedar Falls metropolitan area.

In Grundy Center, you'll be just a hop and a skip away from the community's vibrant

downtown and restaurant scene as well as a hospital, an aquatic center, a recreational trail and other tourist attractions. And be sure to come to town for the annual county fair in July, which is growing and expanding like never before under the leadership of an aggressive and motivated fair board.

And last but not least, the site east of Beaman along the southern border of the county may be off the beaten path (you'll have to take gravel to get there), but it's a hidden gem worth searching for. Enjoy a pristine natural woods setting with a recreational trail running through the park, and head east toward Gladbrook or back west toward Beaman and Conrad on the Comet/Wolf Creek Trail.

If you have questions regard-

ing accommodations or you're just ready to camp, call the Grundy County Conservation office in Morrison at (319) 345-2688.

**Wolf Creek  
Recreation Area**  
33999 M Ave  
Beaman, IA 50609

*Two miles east of Beaman, IA on 330th St and then one mile south on M Ave*

**History:** This area was purchased by the county in the early 1970s and developed for camping, picnicking, hunting, and other recreational uses.

This is a 93-acre multi-purpose recreation area and boasts native Bur Oak forested areas and reconstructed prairie areas. Facilities available include a shelter house, picnic tables, grills, a pit latrine toilet and a modern shower/restroom

building designed in the private room concept.

The park is connected to the Comet trail, a crushed limestone-surfaced recreational trail. Of special interest is the 60-foot suspension bridge on this connecting trail. The Comet Trail connects the towns of Beaman, Conrad, and Gladbrook with the park.

There are a total of 22 designated camping sites - 15 camp sites have electricity available and 11 do not. There are also tent and group primitive camping areas. Camping fees are \$15.00 per night per unit for those camping in a designated camp site with electricity available, \$10.00 for any other site. Non-profit youth groups are allowed to camp for free in the primitive camping area.

*Continued on pg. 27*



Wolf Creek Playground

Continued from pg. 26

The shelter house is available for advance reservations by calling the conservation board offices. An application form is available and the cost to reserve the shelter is \$20.00 per 5 hour period.

### Grundy County Fairgrounds

1308 4th St  
Grundy Center, IA 50638

### Grundy County Lake & Park

Just south off of HWY 20 exit 215 at the southwest corner of Dike.

16855 U Ave. SW corner of Dike. Immediately south of Hwy 20 & T-55 interchange.

**History:** This area is Grundy County's largest multi-use recreation area. The 40-acre lake was created by IDOT when borrow material was needed for the highway 20 construction. The lake site was transferred to Grundy County in August, 2002. Additional property was purchased from the IDOT using Resource Enhancement and



Protection (REAP) grant funds making the total area 255-acres. The park officially opened to the public in July, 2003.

Anglers enjoy the boat ramp, kayak launcher, rock fishing jetties and accessible fishing platform. The lake contains largemouth bass, bluegill, crappie, perch, walleye, and channel catfish.

A 60-site modern campground contains large, level camping pads - both back-in and pull-through sites. Camping fees are \$15.00 per night for all sites. The shower/restroom building was designed with the private family concept providing users six modern rooms.

Bicyclers and hikers enjoy the hard-surfaced trail around the lake that also connects to the campground and the City of Dike recreational facilities.

There are two open air shelter houses, a gazebo, and ample stationary and swinging style benches.

Hunting/habitat: The park area includes over 40 acres of reconstructed prairie area, wetlands, and reforested areas. Hunters harvest pheasants, rabbits, waterfowl and deer.



**NAPA**

**AUTO PARTS**

**NEW/EXPANDED LOCATION SERVING YOU BETTER**

**707 G Ave, Grundy Center, IA**  
**(319) 824-6917**  
**Mon-Fri 8-5, Sat 8-12**

# County Parks

Wolfe Family Preserve

## Beaman Arboretum

📍 33245 King Ave,  
Beaman

*Follow 330<sup>th</sup> Street east of Beaman to King Avenue, then turn south.*

**About the Park:** This five-acre arboretum was planted by Ellis Lepley in 1934 on school property and is an early example of an outdoor classroom. The area adjoins the BCLUW High School baseball field and accessed from that school property (off Beckman Street in Beaman) or from 33235 King Avenue. The wide variety of mature oaks and maples planted there form a lovely canopy for trail users.

## Beaver Roadside Park

📍 15825 N Ave (HWY 14),  
between Grundy Center and Parkersburg.

*Follow N Avenue (HWY 14) approximately 7.5 miles north of Grundy Center, just past the interchange with HWY 20. Park is on west side of road.*

**About the Park:** This highway rest stop is located near the junction of Highway 14 and Highway 20, across from the Grundy County Welcome Center. This one-acre rest area has picnic tables, an open shelter, grills and a pit-style toilet with handicapped accessibility. There is also a short grass hiking trail if you need to stretch

your legs from your travels.

## Black Hawk Wildlife Area

📍 24433 S Ave (T-53),  
1/2 mile north of Morrison.  
*In Morrison, turn north on S Avenue. Park is on westside of road.*

**About the Park:** A 53-acre park featuring an outdoor classroom for environmental education as well as wildlife habitat, hiking, hunting for pheasants, rabbits and partridge, and fishing in the Black Hawk Creek. Facilities include hiking and self-guided nature trails (with a suspension bridge across Black Hawk Creek) and toilets.

## Buckles Wildlife Area

📍 25005 T Ave,  
between Reinbeck  
and Morrison

Travel one mile east of Morrison on Highway 175, then turn north about 1/4 mile.

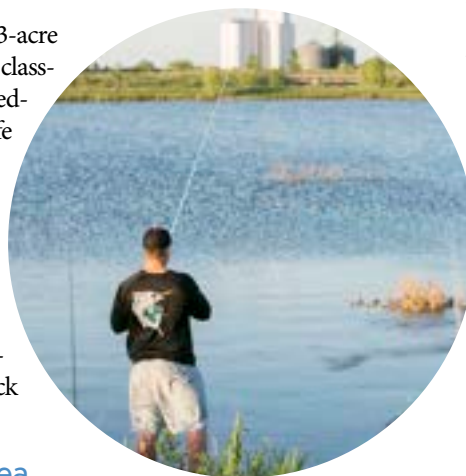
**About the Park:** This 27 acre tract of wildlife habitat provides fishing and hunting for pheasants, rabbits and partridge.

## Copley-Strohbehn Preserve

📍 25450 U Ave (T-55),  
Northwest of Reinbeck  
*Follow HWY 175 west of Reinbeck to U Avenue (T-55),*

*then go north approximately 1/10 mile.*

**About the Park:** This 12-acre area was a gift to the residents of Grundy County and since acquisition has had extensive tree and shrub planting.



## Grundy County Lake

📍 16855 U Ave,  
South of Dike

*Lake access: One-half mile south of Dike on U Ave (T-55).  
Campground access: One-half mile south of Dike on U Avenue (T-55) to 170<sup>th</sup> Street (just past lake entrance), then go west 1/2 mile.*

**About the Park:** This area is Grundy County's newest recreation area. The 40-acre lake was created by the Iowa Department of Transportation in 1999 when borrow material was needed for the construction of Highway 20. The DOT transferred

the area to Grundy County by agreement upon completion of the highway project. The lake site was transferred to Grundy County in August, 2002. Additional property was purchased from the DOT using Resource Enhancement and Protection (REAP) grant funds making the total area 255-acres. Construction of the boat ramp and access drives around the lake began in 2002 and the park officially opened to the public in July, 2003.

The park features a lake, nature trail, asphalt bike/hike trail and a modern campground with 60 electric-equipped sites, a playground and shower house.

## Herbert Gutknecht Park

📍 29851 Diagonal Rd,  
Northwest of Reinbeck

*Follow HWY 175 northwest from Reinbeck one mile to intersection of U Avenue (HWY T-55). Park is adjacent to the Pioneer Heritage Trail and the Oak Leaf Golf and Country Club.*

**About the Park:** This one-acre park features five designated campsites. There is no charge for overnight camping. There is also hand-pumped running water, picnic tables and a shelter. The restroom is a pit type with handicapped accessibility.

*Continued on pg. 29*



Ida M. Miller Memorial Park

*Continued from pg. 28*

Adjoining the edge of the park is the Pioneer Trail. This park is an excellent stop when traveling and a popular place to view the fireworks coming from Reinbeck on the Fourth of July.

### Ida M. Miller Memorial Park

📍 13945 240<sup>th</sup> St (HWY 175), Between Grundy Center and Eldora  
*Follow HWY 175 west 8.5 miles from Grundy Center at the intersection of E Avenue, just west of intersection with County Road T-19.*

**About the Park:** This two-acre rest stop has picnic tables, grills, shelter house, play structure and a handicapped accessible pit toilet. A large stone fitted with a bronze plaque tells that the park is named after Ida Miller, the first white child born in Melrose Township.

### J.H. Roadman Memorial Park

📍 28403 160<sup>th</sup> St, West of Dike  
*Follow 160<sup>th</sup> Street (D-19) west of Dike 1.5 miles Park is on north side of road.*

**About the Park:** This 10-acre roadside park is named in memory of J.H. Roadman and contains two small fishing ponds. Facilities found there include picnic tables and grilles, pit toilets, playground

equipment and a shelter with electricity. The shelter house is available for advance reservations by calling the conservation board offices. The trails include a self-guided interpretive trail with brochures available in the shelter house and another walking trail. Each trail goes around its own pond. These trails provide a pleasant way to stretch your legs after traveling any distance. Overnight camping is allowed in the parking area.

### Pioneer Trail

📍 Between Reinbeck and Holland  
*Trail heads in or near Holland, Grundy Center, Morrison and Reinbeck*

**About the Park -** Former railroad right-of-way transformed into a limestone-covered trail.

### Reinbeck Greenbelt Area

📍 99 N Greenbelt Rd, Reinbeck  
*In Reinbeck on HWY 175, turn north on Commercial Street and turn left on North Greenbelt Road.*

**About the Park:** This 67-acre portion of the Greenbelt provides camping, fishing, hunting for pheasants, rabbits and partridge. It also has space available for snowmobiling, hiking, equestrian trails and a horse riding arena. Also pres-

ent are 25-, 50- and 100-yard shooting ranges and a field archery range.

### Shearn Memorial Park

📍 24125 Q Ave, Between Morrison and Grundy Center  
*Between Grundy Center and Morrison at intersection*

**About the Park:** This half-acre rest stop contains picnic tables, grills, water, toilets and a shelter house.

### Stoehr Fishing Area

📍 21300 H Ave, West of Holland  
*Travel west from Holland four miles on 205<sup>th</sup> Street (D-35) to H Avenue, then turn south and travel one mile.*

**About the Park:** On this five-acre area you will find two spring-fed fishing ponds that

are about one-acre each in size. Facilities here include a shelter house with electricity, picnic tables, pit-style toilets and a fishing pier - all are handicapped accessible. Grills are available for cooking out. The area also allows overnight camping. Fish species stocked in the ponds include channel catfish, large mouth bass and bluegill.

### Wolf Creek Recreation Area

📍 33999 M Ave, East of Beaman  
*Travel east from Beaman on 330<sup>th</sup> Street and then turn south on M Avenue.*

**About the Park:** This is a 93 acre multi-purpose recreation area. It provides picnicking, camping, hiking, hunting for rabbits and pheasants and fishing in Wolf Creek. Facilities available include a shelter house with electricity, water, picnic tables, grills, pit type toilets and a composite playground structure.

### Wolfe Family Preserve

📍 24511 Diagonal Rd, East of Grundy Center  
*Travel east from Grundy Center on Diagonal Rd (HWY 175) one mile to park.*

**About the Park:** This 19 acre tract of land was a gift to the residents of Grundy County. The Pioneer Trail winds through the stately Bur Oak Trees and past the man-made wetland here.



Elmwood Park



# Area Recreation

## Aquatic Centers

### Conrad Family Aquatic Center

📍 611 North Main  
☎ 641-366-2151

### Reinbeck Family Aquatic Center

📍 Elmwood Park  
☎ 319-788-2094

### Dike Swimming Pool

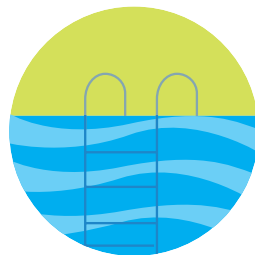
📍 255 7th St  
☎ 319-989-2443

### Wellsburg Municipal Pool

📍 102 McAdoo St  
☎ 641-869-5204

### Grundy Center Family Aquatic Center

📍 Liberty Park  
605 12th St  
☎ 319-825-5200



**MARV'S**  
**REPAIR & TOWING**  
**319-989-2495**  
CAR WASH MARV GEIKEN, OWNER STORAGE  
111 WEST DIKE STREET · DIKE, IA

## Bowling Alley

Crystal Bowl  
📍 106 G Avenue,  
Grundy Center

☎ 319-825-6314  
Open August-April

**LET'S GO BOWLING!**

Open Bowling

Leagues

FUN FOR EVERYONE!

POP, BEER,  
MIXED DRINKS  
MUSIC & ENTERTAINMENT

**CRYSTAL BOWL**

Proud to be part of Grundy County!  
We appreciate your business!

1602 G Avenue, Grundy Center | 319-825-6314

# Movie Theater



## Center Theatre

602 7th St,  
Grundy Center  
319-824-6571  
www.grundycentertheatre.org  
Two digital screens,  
First-run movies



# Fitness Centers

## Fitness Center The Den

668 Main St, Dike  
319-404-7844

Fitness Center, Classes,  
Massage Therapy

## Grundy Family YMCA

102 E G Ave,  
Grundy Center  
319-825-6210

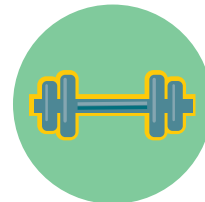
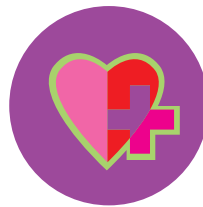
Fitness Center, Classes

## Jill Fiscus Center

610 Center St, Conrad  
Located inside  
BCLUW High School  
641-366-2810

## Reinbeck Fitness Center

414 Main St,  
Reinbeck  
Located inside  
Reinbeck City Hall  
319-788-6404



Caring for you and your family with  
**chiropractic  
care**

**Dr. Paul Eberline  
Dr. Mitchell Boerm**

We offer other specialty services, including:

- Acupuncture
- D.O.T. Physicals
- Nutrition Assessments
- Pre-employment physicals

Also offering massage therapy!  
Holly is seeing clients at Eberline Family Chiropractic  
Call for your appointment: 641-751-6901



www.eberlinechiro.com  
412 G Ave | Grundy Center | 319-824-3650  
**SERVICES TO BETTER SERVE YOU**

# Tobias Insurance

626 Main Street, Dike  
Kurt Kelley & David Kelley

**319.989.2329**

Affiliated with **GRINNELL MUTUAL**

Trust in Tomorrow:

## Town & Country Golf Club



Oak Leaf Country Club

# Golf Courses

### Fox Ridge Golf Club

📍 355 Country Club Ln, Dike

**Course type:** Public (Memberships available)

**Holes:** Eighteen (Par 72)

**Yardages:** 6,809 (Back tees)

**Highlights:** Grundy County's only public course and only 18-hole golf course.

### Oak Leaf Country Club

📍 29725 Diagonal Rd, West of Reinbeck

**Course type:** Private

**Holes:** Nine (Par 35)

**Yardages:** 2,999 (Back tees) 2,732 (Forward tees)

**Highlights** – Opened in 1954, course features rolling hills and tall, mature trees.

### Oakwood Golf Course

📍 Oakwood Dr, Conrad

**Course type:**

Semi-private

**Holes:** Nine (Par 35).

**Yardages:**

2,966 (Back tees);

2,646 (Forward Tees)

**Highlights:** Picturesque course with narrow fairways and water in play on several holes.

### Town and Country Golf Club

📍 1501 12th St, Grundy Center

**Course type:**

Semi-private

**Holes:** Nine (Par 36)

**Yardages:**

3,337 (Back tees);

2,643 (Forward tees)

**Highlights:** Built in 1970 on rolling terrain, course features small ponds and creeks that come into play on several holes.

### Meadowbrook Golf Course

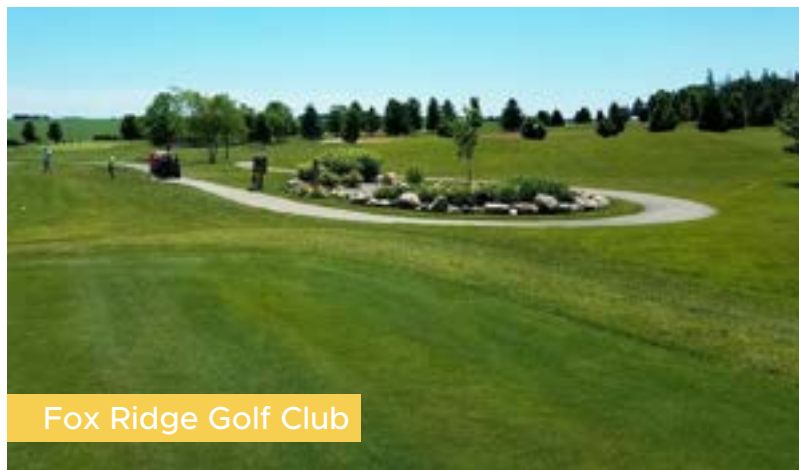
📍 51 West Fifth Street, Wellsburg

**Course type:** Semi-private

**Holes:** Nine (Par 35)

**Yardages:** 2,671 (Back tees); 2,374 (Forward tees)

**Highlights:** Opened in 1963. Rolling terrain with wide, tree-lined fairways and sand bunkers on most holes. Greens are flat and generally slow.



Fox Ridge Golf Club

## Golfing in Grundy!

**BEAUTIFUL AND WELL MAINTAINED  
9 HOLE COURSE**

Great food and appetizers!

Club house and fully stocked bar

Party room, rental space available

Welcoming new members!

TOWN & COUNTRY  
GOLF CLUB

www.facebook.com/TNCGOLFCLUB

1501 S 12th St  
Grundy Center, IA  
319-824-3712

www.tcgolfclub.com  
tcgolfclub1@gmail.com



# Libraries

## Dike PUBLIC LIBRARY

📍 133 Elder St, Dike

### HOURS

M: 10 a.m.–6 p.m.  
W: Noon–8 p.m.  
T, TH, F: 10 a.m.–5 p.m.  
SAT: 9 a.m.–Noon

### WEBSITE

[www.dike.lib.ia.us](http://www.dike.lib.ia.us)

## Kling MEMORIAL LIBRARY

📍 708 Seventh St  
Grundy Center

### HOURS

M,W,F: 10 a.m.–5 p.m.  
T,TH: 10 a.m.–7 p.m.  
SAT: 10 a.m.–Noon

### WEBSITE

[www.grundycenter.lib.ia.us](http://www.grundycenter.lib.ia.us)

## Beaman COMMUNITY MEMORIAL LIBRARY

📍 223 Main St,  
Beaman

### HOURS

M-F: 2–6 p.m.  
SAT: 10 a.m.–Noon

### WEBSITE

[www.beaman.lib.ia.us](http://www.beaman.lib.ia.us)

## Conrad PUBLIC LIBRARY

📍 114 North Main, Conrad

### HOURS

Hours Subject to Change

M-T-TH-F: 2 p.m.–8 p.m.

W: 9 a.m.–8 p.m.

SAT: 9 a.m.–Noon

### WEBSITE

[www.conrad.lib.ia.us](http://www.conrad.lib.ia.us)

## Reinbeck PUBLIC LIBRARY

📍 501 Clark St  
Reinbeck

### HOURS

M,T,F: 11 a.m.–5 p.m.

W: 11 a.m.–6 p.m.

TH: 11 a.m.–5 p.m.

SAT: 11 a.m.–4 p.m.

### WEBSITE

[www.reinbeck.lib.ia.us](http://www.reinbeck.lib.ia.us)

## Wellsburg PUBLIC LIBRARY

📍 411 N. Adams St  
Wellsburg

### HOURS

T-W-F: 10 a.m.–5 p.m.

TH: 10 a.m.–7 p.m.

SAT: 10 a.m.–Noon

### WEBSITE

[www.wellsburg.lib.ia.us](http://www.wellsburg.lib.ia.us)

## READY TO PURCHASE A HOME?

TAKE ADVANTAGE OF  
OUR ALL TIME LOW  
INTEREST RATES!



Stop in or call  
Steph today!

NMLS# 1032523

She is ready to help you no matter what  
stage of the process you are in!



319-824-2600

508 G Avenue  
Grundy Center, IA



**GREEN BELT**  
BANK & TRUST

Leading the Way  
[www.greenbeltbank.com](http://www.greenbeltbank.com)

APPLY ONLINE TODAY!

Member FDIC  
GBB&T NMLS# 446252

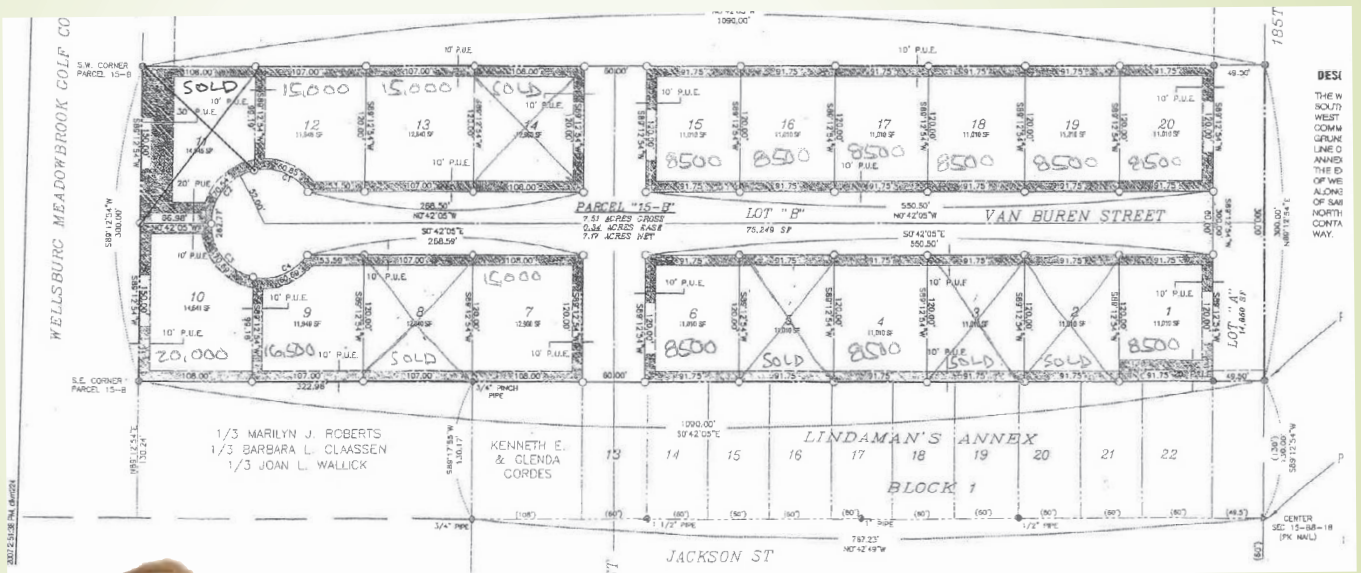


**NEW**

# Housing Development on West edge of Wellsburg along Wellsburg Golf Course



Paved street ending in cul-de-sac. Water, sewer, electric available at street. Generous lot sizes. Deed of Dedication available.



## LISTINGS:

- |                              |         |                              |          |
|------------------------------|---------|------------------------------|----------|
| 600 Van Buren St. (1).....   | \$8,500 | 610 Van Buren St. (6).....   | \$8,500  |
| 601 Van Buren St (20) .....  | \$8,500 | 611 Van Buren St. (15) ..... | \$8,500  |
| 603 Van Buren St. (19) ..... | \$8,500 | 700 Van Buren St. (7).....   | \$15,000 |
| 605 Van Buren St. (18) ..... | \$8,500 | 703 Van Buren St. (13) ...   | \$15,000 |
| 606 Van Buren St. (4).....   | \$8,500 | 704 Van Buren St. (9).....   | \$16,500 |
| 607 Van Buren St. (17) ..... | \$8,500 | 705 Van Buren St. (12) ...   | \$15,000 |
| 609 Van Buren St. (16) ..... | \$8,500 | 706 Van Buren St. (10) ...   | \$20,000 |

**Michele Henze, RESIDENTIAL AGENT**  
Email: [michelehenzerealtor1@gmail.com](mailto:michelehenzerealtor1@gmail.com)  
Cell Phone: 319-231-2892

# Location Location Location

Is an expansion or relocation in your company's future?

Location plays a key role in efficiently getting your product to market.

Grundy County is in one of the Midwest's fastest growing logistics corridors.

## ***THE ADVANTAGES....***


- > Access to major 4-lane highway corridor. Highway 20, I-380, I-35, Hwy 218
- > Shovel ready Industrial parks throughout Grundy & Butler counties
- > Developed Industrial park adjacent to Highway 20 at Highway 14 interchange
- > Labor force draw of over 200,000 in the Cedar Valley Region
- > Confidential site selection assistance from search to start-up
- > Financial assistance programs
- > Small town quality of life, with larger city amenities only minutes away in Waterloo/Cedar Falls



Jeff Kolb  
*Executive Director*

E-Mail [butlergrundy@netins.net](mailto:butlergrundy@netins.net)  
Phone (319) 267-2858

422 North Main  
Allison, Iowa 50602



For more than  
85 years GNB has lived  
its mission to build lifetime  
customer relationships and  
help achieve financial dreams.

We offer quality banking, insurance,  
investment and real estate solutions.

**Stop by or visit us at [gnbbank.com](http://gnbbank.com).**



## **8 LOCATIONS TO SERVE YOU!**

Grundy Center  
Conrad  
Ackley  
Geneva  
Iowa Falls  
Manchester  
Marshalltown  
Story City

**800.545.0172**

MEMBER  
**FDIC**

